

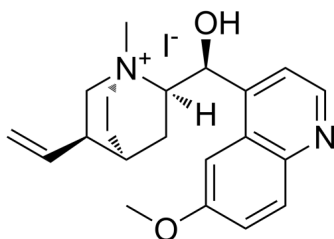
Quinidine methiodide

Cat. No.: HY-150123
Batch No.: 322491
CAS No.: 42982-87-6
Molecular Formula: C₂₁H₂₇IN₂O₂

ANALYTICAL DATA

Theoretical: C(54.08%), H(5.84%), N(6.01%)
Result: C(53.09%), H(6.02%), N(5.90%)

Chemical Structure:



Caution: Product has not been fully validated for medical applications. For research use only.

Tel: 609-228-6898

Fax: 609-228-5909

E-mail: tech@MedChemExpress.com

Address: 1 Deer Park Dr, Suite Q, Monmouth Junction, NJ 08852, USA