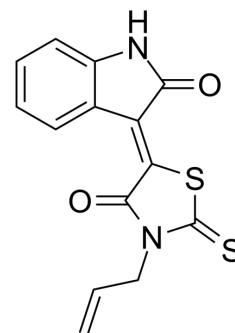


ClpB-IN-1

Cat. No.:	HY-150166		
CAS No.:	1453172-23-0		
Molecular Formula:	C ₁₄ H ₁₀ N ₂ O ₂ S ₂		
Molecular Weight:	302.37		
Target:	Bacterial		
Pathway:	Anti-infection		
Storage:	Powder	-20°C	3 years
		4°C	2 years
	In solvent	-80°C	6 months
		-20°C	1 month



SOLVENT & SOLUBILITY

In Vitro

DMSO : 5 mg/mL (16.54 mM; ultrasonic and warming and heat to 60°C)

Solvent	Mass	Concentration		
		1 mg	5 mg	10 mg
Preparing Stock Solutions	1 mM	3.3072 mL	16.5360 mL	33.0721 mL
	5 mM	0.6614 mL	3.3072 mL	6.6144 mL
	10 mM	0.3307 mL	1.6536 mL	3.3072 mL

Please refer to the solubility information to select the appropriate solvent.

BIOLOGICAL ACTIVITY

Description

ClpB-IN-1 (compound 7) is a potent ClpB inhibitor. ClpB-IN-1 is a potential antibacterial agents^[1].

REFERENCES

[1]. Martin I, et, al. Screening and evaluation of small organic molecules as ClpB inhibitors and potential antimicrobials. J Med Chem. 2013 Sep 26;56(18):7177-89.

Caution: Product has not been fully validated for medical applications. For research use only.

Tel: 609-228-6898

Fax: 609-228-5909

E-mail: tech@MedChemExpress.com

Address: 1 Deer Park Dr, Suite Q, Monmouth Junction, NJ 08852, USA