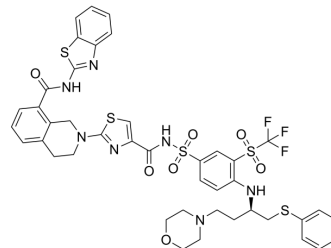


## A-1293102

Cat. No.:	HY-150266
CAS No.:	1565759-96-7
Molecular Formula:	C <sub>42</sub> H <sub>40</sub> F <sub>3</sub> N <sub>7</sub> O <sub>7</sub> S <sub>5</sub>
Molecular Weight:	972.13
Target:	Bcl-2 Family
Pathway:	Apoptosis
Storage:	Please store the product under the recommended conditions in the Certificate of Analysis.



### BIOLOGICAL ACTIVITY

#### Description

A-1293102 is a potent and selective BCL-XL inhibitor that kills BCL-XL-dependent tumor cells<sup>[1]</sup>.

### REFERENCES

[1]. Zhi-Fu Tao, et al. Structure-Based Design of A-1293102, a Potent and Selective BCL-XL Inhibitor. ACS Medicinal Chemistry Letters 2021 12 (6), 1011-1016.

**Caution: Product has not been fully validated for medical applications. For research use only.**

Tel: 609-228-6898

Fax: 609-228-5909

E-mail: tech@MedChemExpress.com

Address: 1 Deer Park Dr, Suite Q, Monmouth Junction, NJ 08852, USA