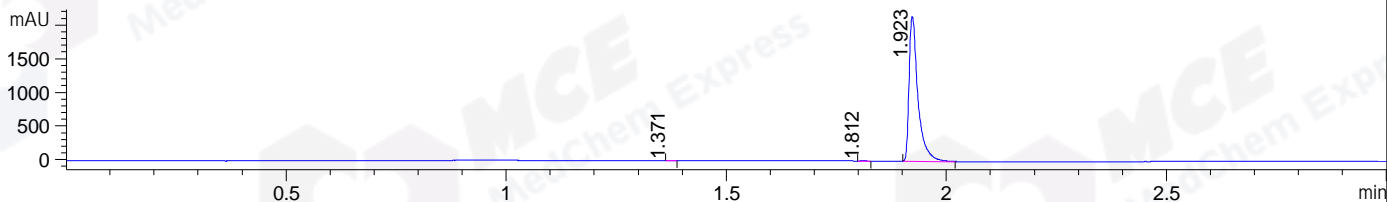
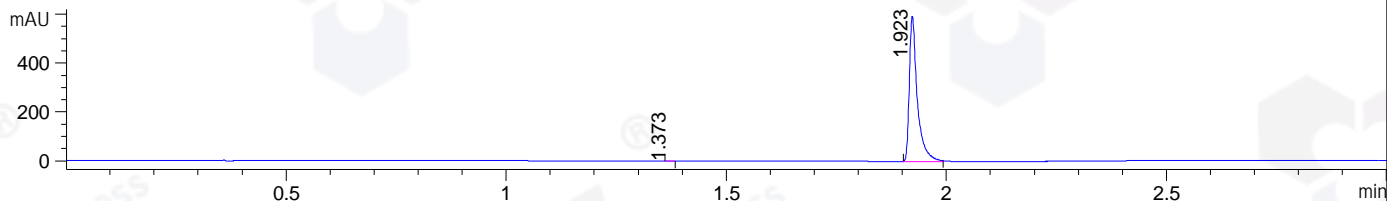


File ..1\DATA\2019\20190424\558\BIZ2019-423-WYQ3.D Tgt Mass (CHM):  
 Injection Date : 24 Apr 19 11:12 am +0800 Seq. Line : 23  
 Sample Name : BIZ2019-423-WYQ3 Location : P2-C-01  
 Acq. Operator : LQ\_1052 Inj : 1  
 Spec. Reported : MS Integration Inj Volume : 1 ul  
 Acq. Method : D:\Chem32\1\data\2019\20190424\558\1-POS-3MIN-1.M  
 Analysis Method : D:\CHEM32\1\DATA\2019\20190424\558\1-POS-3MIN-1.M  
 Catalog No : HY-15036A Batch#40458  
 Method Info : Mobile Phase: A: water(0.01%TFA) B:ACN(0.01%TFA)  
 Gradient: 5% to 95%B within 1.3 min  
 Flow Rate :1.8ml/min  
 Column :SunFire C18, 4.6\*50mm,3.5um A-RP-322  
 Oven Temperature : 45

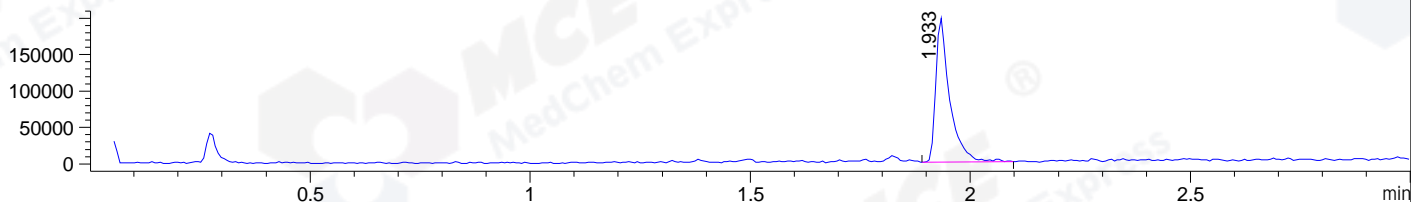
DAD1 B, Sig=214,4 Ref=off



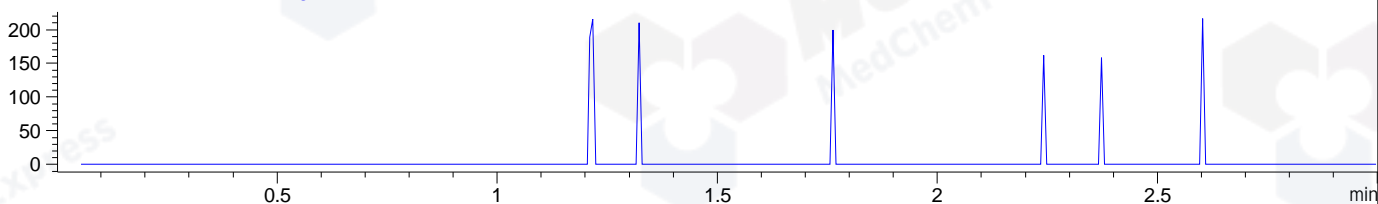
DAD1 C, Sig=254,4 Ref=off



MSD1 TIC, MS File ES-API, Pos, Scan, Frag: 70



Ion 369.1, MSD1 369.1, Target Mass 368.1 +H Positive, EIC=368.8:369.8



## Integration Results for DAD1 B, Sig=214,4 Ref=off

RetTim	Width	Area	Height	Area%	MS (+)
1.37	0.01	0.45	0.65	0.01	ND
1.81	0.02	1.62	1.80	0.05	ND
1.92	0.02	3033.04	2155.23	99.93	296

## Integration Results for DAD1 C, Sig=254,4 Ref=off

RetTim	Width	Area	Height	Area%	MS (+)
1.37	0.01	0.32	0.48	0.04	ND
1.92	0.02	749.95	594.82	99.96	296

## Integration Results for MSD1 TIC, MS File

RetTim	Width	Area	Height	Area%	MS (+)
1.93	0.03	439559.69	197674.20	100.00	296

Ret. Time: 1.93

<<<< POSITIVE SPECTRA >>>>

ES-API Positive

