

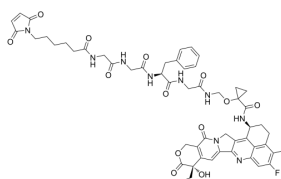
## MC-Gly-Gly-Phe-Gly-amide-cyclopropanol-amide-Exatecan

Cat. No.: HY-150402  
 CAS No.: 2414254-41-2  
 Batch No.: 240528  
 Chemical Name: 1-(((S)-7-Benzyl-20-(2,5-dioxo-2,5-dihydro-1H-pyrrol-1-yl)-3,6,9,12,15-pentaoxo-2,5,8,11,14-pentazaicosyl)oxy)-N-((1S,9S)-9-ethyl-5-fluoro-9-hydroxy-4-methyl-10,13-dioxo-1,2,3,9,10,12,13,15-octahydrobenzo[de]pyrano[3',4':6,7]indolizino[1,2-b]quinolin-1-yl)cyclopropanecarboxamide

### PHYSICAL AND CHEMICAL PROPERTIES

Molecular Formula: C<sub>54</sub>H<sub>58</sub>FN<sub>9</sub>O<sub>13</sub>  
 Molecular Weight: 1060.09  
 Storage: -20°C, sealed storage, away from moisture  
 \* In solvent : -80°C, 6 months; -20°C, 1 month (sealed storage, away from moisture)

#### Chemical Structure:



### ANALYTICAL DATA

Appearance: White to off-white (Solid)  
<sup>1</sup>H NMR Spectrum: Consistent with structure  
 Purity (HPLC): 95.03%  
 Conclusion: The product has been tested and complies with the given specifications.

**Caution: Product has not been fully validated for medical applications. For research use only.**

Tel: 609-228-6898

Fax: 609-228-5909

E-mail: tech@MedChemExpress.com

Address: 1 Deer Park Dr, Suite Q, Monmouth Junction, NJ 08852, USA