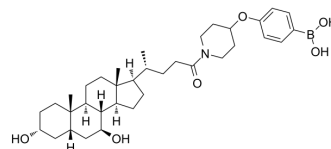


Autotaxin-IN-6

Cat. No.:	HY-150614
CAS No.:	2800898-98-8
Molecular Formula:	C ₃₅ H ₅₄ BNO ₆
Molecular Weight:	595.62
Target:	Phosphodiesterase (PDE); LPL Receptor
Pathway:	Metabolic Enzyme/Protease; GPCR/G Protein
Storage:	Please store the product under the recommended conditions in the Certificate of Analysis.



BIOLOGICAL ACTIVITY

Description	Autotaxin-IN-6 (compound 23) is a potent autotaxin (ATX) inhibitor with an IC ₅₀ value of 30 nM. Autotaxin-IN-6 can reduce cell migration. Autotaxin-IN-6 can be used for researching anticancer ^[1] .
IC₅₀ & Target	Autotaxin 30 nM (IC ₅₀)
In Vitro	Autotaxin-IN-6 (compound 23) inhibits ATX-stimulated HeLa cells and results in significantly decrease of LPA1 internalization of approximately 75% ^[1] . Autotaxin-IN-6 prevents LPA1 activation and its Gαi- and PI3K-dependent signaling responses ^[1] . MCE has not independently confirmed the accuracy of these methods. They are for reference only.

REFERENCES

[1]. Clark JM, et al. Structure-Based Design of a Novel Class of Autotaxin Inhibitors Based on Endogenous Allosteric Modulators. J Med Chem. 2022 Apr 28;65(8):6338-6351.

Caution: Product has not been fully validated for medical applications. For research use only.

Tel: 609-228-6898

Fax: 609-228-5909

E-mail: tech@MedChemExpress.com

Address: 1 Deer Park Dr, Suite Q, Monmouth Junction, NJ 08852, USA