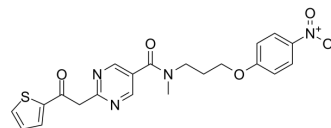


## AChE-IN-22

Cat. No.:	HY-150728
CAS No.:	3032264-62-0
Molecular Formula:	C <sub>21</sub> H <sub>20</sub> N <sub>4</sub> O <sub>5</sub> S
Molecular Weight:	440.47
Target:	Cholinesterase (ChE)
Pathway:	Neuronal Signaling
Storage:	Please store the product under the recommended conditions in the Certificate of Analysis.



### BIOLOGICAL ACTIVITY

Description	AChE-IN-22 (compound 10q) is a selective acetylcholinesterase (AChE) inhibitor against AChE and BuChE with the IC <sub>50</sub> values of 0.88 μM and 10 μM, respectively. AChE-IN-22 can bind to both the CAS (catalytic active site) and PAS (peripheral anionic site) of AChE and has the potential for the research of Alzheimer's disease <sup>[1]</sup> .
IC <sub>50</sub> & Target	AChE

### REFERENCES

[1]. Chuang Han, et al. Design, synthesis and evaluation of 2-(2-oxoethyl)pyrimidine-5-carboxamide derivatives as acetylcholinesterase inhibitors. Bioorg Med Chem Lett. 2022 Sep 15;72:128873.

**Caution: Product has not been fully validated for medical applications. For research use only.**

Tel: 609-228-6898

Fax: 609-228-5909

E-mail: tech@MedChemExpress.com

Address: 1 Deer Park Dr, Suite Q, Monmouth Junction, NJ 08852, USA