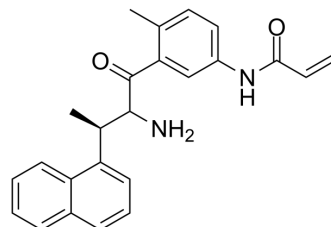


## PLP\_Snyder530

Cat. No.:	HY-150786
Molecular Formula:	C <sub>24</sub> H <sub>24</sub> N <sub>2</sub> O <sub>2</sub>
Molecular Weight:	372.46
Target:	SARS-CoV
Pathway:	Anti-infection
Storage:	Please store the product under the recommended conditions in the Certificate of Analysis.



### BIOLOGICAL ACTIVITY

<b>Description</b>	PLP_Snyder530 is a potent papain-like protease (PL <sup>Pro</sup> ) inhibitor with an IC <sub>50</sub> value of 6.4 μM. PLP_Snyder530 induces conformational changes in SARS-COV-2 papain-like protease, inhibiting SARS-CoV-2 replication. PLP_Snyder530 can be used for SARS-CoV-2 research <sup>[1]</sup> .
<b>IC<sub>50</sub> &amp; Target</b>	IC <sub>50</sub> : 6.4 μM (papain-like protease) <sup>[1]</sup>
<b>In Vitro</b>	PLP_Snyder530 induces conformational changes mainly in BL2 region and increases the activity against PL <sup>Pro</sup> <sup>[1]</sup> . MCE has not independently confirmed the accuracy of these methods. They are for reference only.

### REFERENCES

[1]. Ferreira GM, et, al. Inhibitor induced conformational changes in SARS-COV-2 papain-like protease. Sci Rep. 2022 Jul 8;12(1):11585.

**Caution: Product has not been fully validated for medical applications. For research use only.**

Tel: 609-228-6898

Fax: 609-228-5909

E-mail: tech@MedChemExpress.com

Address: 1 Deer Park Dr, Suite Q, Monmouth Junction, NJ 08852, USA