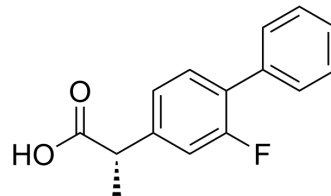


## (S)-Flurbiprofen

Cat. No.:	HY-15123		
CAS No.:	51543-39-6		
Molecular Formula:	C <sub>15</sub> H <sub>13</sub> FO <sub>2</sub>		
Molecular Weight:	244.26		
Target:	COX; PGE synthase		
Pathway:	Immunology/Inflammation		
Storage:	Powder	-20°C	3 years
		4°C	2 years
	In solvent	-80°C	6 months
		-20°C	1 month



### SOLVENT & SOLUBILITY

In Vitro	DMSO : 100 mg/mL (409.40 mM; Need ultrasonic)			
		Solvent Concentration	Mass	
			1 mg	5 mg
			10 mg	
	Preparing Stock Solutions	1 mM	4.0940 mL	20.4700 mL
	5 mM	0.8188 mL	4.0940 mL	8.1880 mL
	10 mM	0.4094 mL	2.0470 mL	4.0940 mL
Please refer to the solubility information to select the appropriate solvent.				
In Vivo	1. Add each solvent one by one: 10% DMSO >> 90% (20% SBE-β-CD in saline) Solubility: ≥ 2.5 mg/mL (10.23 mM); Clear solution  2. Add each solvent one by one: 10% DMSO >> 90% corn oil Solubility: ≥ 2.5 mg/mL (10.23 mM); Clear solution			

### BIOLOGICAL ACTIVITY

Description	(S)-Flurbiprofen is an active enantiomer of Flurbiprofen, with IC <sub>50</sub> values of 0.48 μM and 0.47 μM for COX-1 and COX-2, respectively <sup>[1]</sup> .	
IC <sub>50</sub> & Target	COX-1 0.48 μM (IC <sub>50</sub> )	COX-2 0.47 μM (IC <sub>50</sub> )
In Vitro	(S)-Flurbiprofen (10 <sup>-7</sup> M) results in a total suppression of basal and stimulated PGE2 release in rat skin <sup>[2]</sup> . MCE has not independently confirmed the accuracy of these methods. They are for reference only.	

---

## REFERENCES

---

[1]. A Carabaza, et al. Stereoselective Inhibition of Inducible Cyclooxygenase by Chiral Nonsteroidal Antiinflammatory Drugs. J Clin Pharmacol. 1996 Jun;36(6):505-12.

[2]. B Averbeck, et al. Inflammatory Mediators Do Not Stimulate CGRP Release if Prostaglandin Synthesis Is Blocked by S(+)-flurbiprofen in Isolated Rat Skin. Inflamm Res. 2003 Dec;52(12):519-23.

---

**Caution: Product has not been fully validated for medical applications. For research use only.**

Tel: 609-228-6898

Fax: 609-228-5909

E-mail: [tech@MedChemExpress.com](mailto:tech@MedChemExpress.com)

Address: 1 Deer Park Dr, Suite Q, Monmouth Junction, NJ 08852, USA