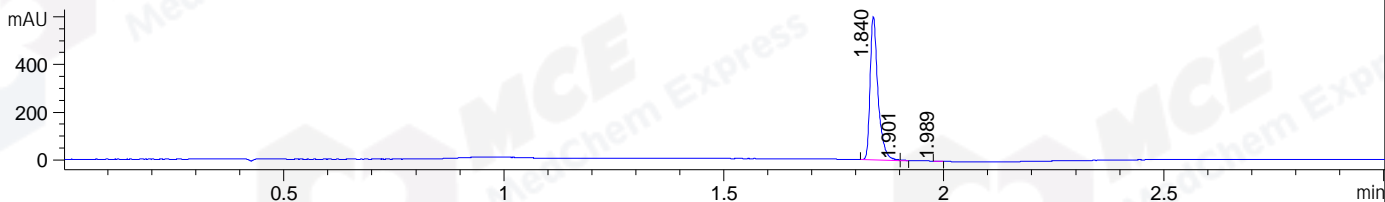
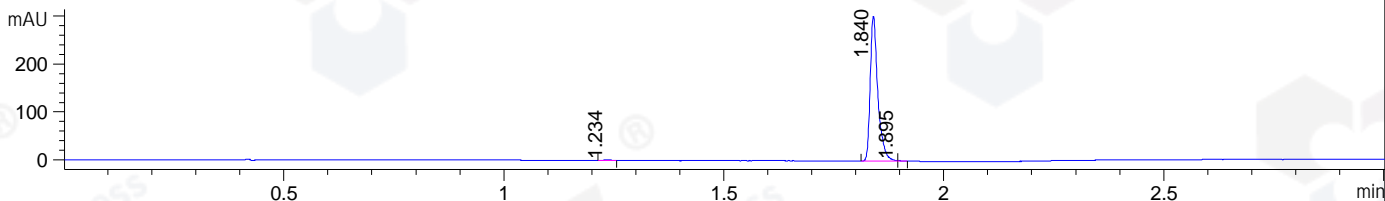


File ..DATA\2019\20191107\758\CPK2019-N07-20514_.D Tgt Mass (CHM):
Injection Date : 7 Nov 19 2:35 pm +0800 Seq. Line : 50
Sample Name : CPK2019-N07-20514 Location : P1-A-09
Acq. Operator : ZJ_1432 Inj : 1
Spec. Reported : MS Integration Inj Volume : 0.5 ul
Acq. Method : D:\Chem32\1\data\2019\20191107\758\1-POS-3MIN.M
Analysis Method : D:\CHEM32\1\DATA\2019\20191107\758\1-POS-3MIN.M
Catalog No : HY-15125 Batch#20514
Method Info : Mobile Phase: A: water(0.01%TFA) B:ACN(0.01%TFA)
Gradient: 5% to 95%B within 1.3 min
Flow Rate :1.8ml/min
Column :SunFire C18, 4.6*50mm,3.5um A-RP-433
Oven Temperature : 45

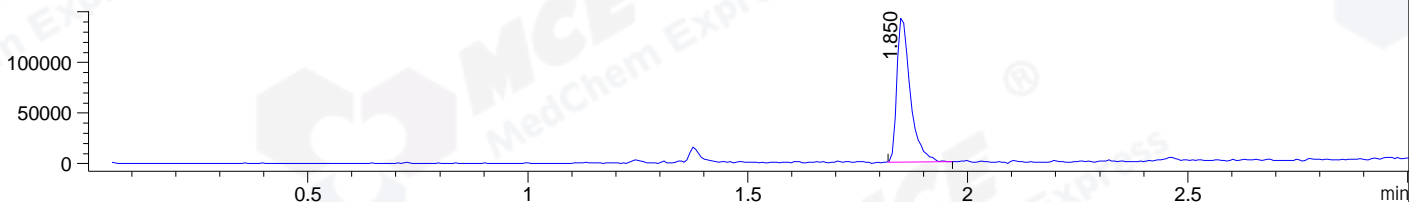
DAD1 B, Sig=214,4 Ref=off



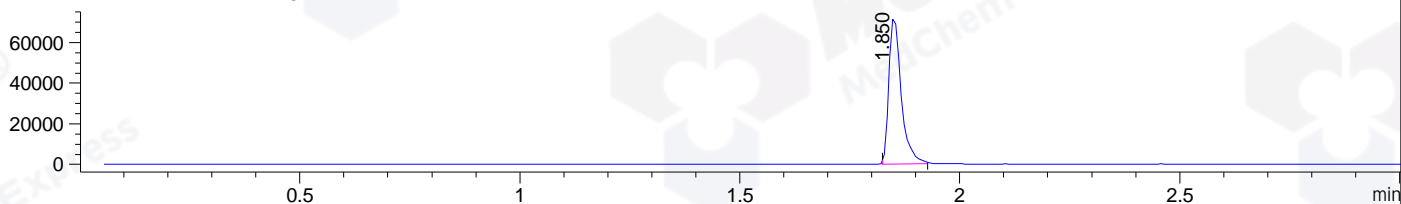
DAD1 C, Sig=254,4 Ref=off



MSD1 TIC, MS File ES-API, Pos, Scan, Frag: 70



Ion 357, MSD1 357, Target Mass 356 +H Positive, EIC=356.7:357.7



Integration Results for DAD1 B, Sig=214,4 Ref=off

RetTim	Width	Area	Height	Area%	MS (+)
1.84	0.02	746.82	600.68	99.69	357
1.90	0.01	1.55	2.65	0.21	357
1.99	0.01	0.78	1.03	0.10	ND

Integration Results for DAD1 C, Sig=254,4 Ref=off

RetTim	Width	Area	Height	Area%	MS (+)
1.23	0.02	1.57	1.58	0.43	247
1.84	0.02	364.60	302.66	99.35	357
1.90	0.01	0.81	1.24	0.22	357

Integration Results for MSD1 TIC, MS File

RetTim	Width	Area	Height	Area%	MS (+)
1.85	0.03	305968.09	145799.73	100.00	357

Ret. Time: 1.85

<<<< POSITIVE SPECTRA >>>>

ES-API Positive

