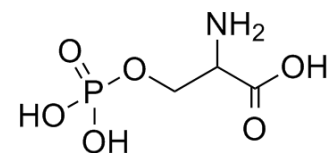


DL-O-Phosphoserine

Cat. No.:	HY-15130
CAS No.:	17885-08-4
Molecular Formula:	C ₃ H ₈ NO ₆ P
Molecular Weight:	185.07
Target:	Endogenous Metabolite
Pathway:	Metabolic Enzyme/Protease
Storage:	Please store the product under the recommended conditions in the COA.



BIOLOGICAL ACTIVITY

Description	DL-O-Phosphoserine, a normal metabolite in human biofluid, is an ester of serine and phosphoric acid.
IC ₅₀ & Target	Human Endogenous Metabolite

Caution: Product has not been fully validated for medical applications. For research use only.

Tel: 609-228-6898

Fax: 609-228-5909

E-mail: tech@MedChemExpress.com

Address: 1 Deer Park Dr, Suite Q, Monmouth Junction, NJ 08852, USA