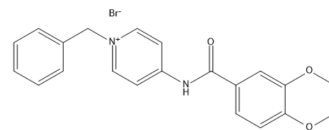


ACHE-IN-26

Cat. No.:	HY-151370
Molecular Formula:	C ₂₁ H ₂₁ BrN ₂ O ₃
Molecular Weight:	429.31
Target:	Others
Pathway:	Others
Storage:	Please store the product under the recommended conditions in the Certificate of Analysis.



BIOLOGICAL ACTIVITY

Description	AChE-IN-26 (compound 4a) is an AChE (acetylcholinesterase) inhibitor with an IC ₅₀ value of 0.42 μM. AChE-IN-26 can be used for the research of Alzheimer's disease ^[1] .
IC ₅₀ & Target	IC ₅₀ : 0.42 μM (AChE) ^[1]
In Vitro	AChE-IN-26 (1 and 10 μM;20 min) shows an in-vitro inhibition to AChE of 91.45%, and inhibits AChE with an IC ₅₀ value of 0.42 μM ^[1] . MCE has not independently confirmed the accuracy of these methods. They are for reference only.

REFERENCES

[1]. Abdullaha M, et al. Discovery of methoxy-naphthyl linked N-(1-benzylpiperidine) benzamide as a blood-brain permeable dual inhibitor of acetylcholinesterase and butyrylcholinesterase. Eur J Med Chem. 2020 Dec 1;207:112761.

Caution: Product has not been fully validated for medical applications. For research use only.

Tel: 609-228-6898

Fax: 609-228-5909

E-mail: tech@MedChemExpress.com

Address: 1 Deer Park Dr, Suite Q, Monmouth Junction, NJ 08852, USA