

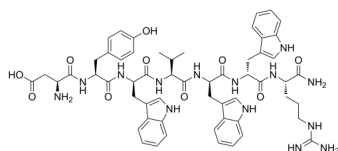
MEN 10207

Cat. No.: HY-151413
Batch No.: 317299
CAS No.: 126050-12-2
Molecular Formula: C₅₇H₆₈N₁₄O₁₀

ANALYTICAL DATA

Theoretical: C(-), H(-), N(-), Peptide Content(≥60.0%)
Result: C(57.78%), H(6.43%), N(16.63%), Peptide Content(94.1%)

Chemical Structure:



Caution: Product has not been fully validated for medical applications. For research use only.

Tel: 609-228-6898

Fax: 609-228-5909

E-mail: tech@MedChemExpress.com

Address: 1 Deer Park Dr, Suite Q, Monmouth Junction, NJ 08852, USA