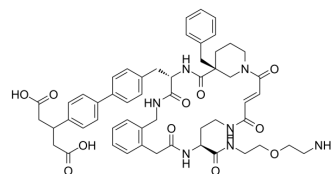


CypD-IN-4

Cat. No.:	HY-151488
CAS No.:	3023438-19-6
Molecular Formula:	C ₅₄ H ₆₃ N ₇ O ₁₁
Molecular Weight:	986.12
Target:	Sirtuin
Pathway:	Cell Cycle/DNA Damage; Epigenetics
Storage:	Please store the product under the recommended conditions in the Certificate of Analysis.



BIOLOGICAL ACTIVITY

Description	CypD-IN-4 is a potent and subtype-selective cyclophilin D (CypD) inhibitor. CypD-IN-4 has CypD affinity with an IC ₅₀ value of 0.057 μM. CypD-IN-4 can be used for the research of several diseases including oxidative stress, neurodegenerative disorders, liver diseases, aging, autophagy and diabetes ^[1] .
IC ₅₀ & Target	IC ₅₀ : 0.057 μM (CypD); 3.4 μM (CypA); 1.1 μM (CypB); 0.8 μM (CypE) ^[1]
In Vitro	CypD-IN-4 (B53) has selectivity for inhibiting CypD, CypA, CypB and CypE with IC ₅₀ values of 0.057 μM, 3.4 μM, 1.1 μM and 0.8 μM, respectively ^[1] . CypD-IN-4 (20 μM) inhibits mitochondrial permeability transition pore opening in isolated mitochondria ^[1] . MCE has not independently confirmed the accuracy of these methods. They are for reference only.

REFERENCES

[1]. Alexander A Peterson, et al. Discovery and molecular basis of subtype-selective cyclophilin inhibitors. Nat Chem Biol. 2022 Sep 26.

Caution: Product has not been fully validated for medical applications. For research use only.

Tel: 609-228-6898

Fax: 609-228-5909

E-mail: tech@MedChemExpress.com

Address: 1 Deer Park Dr, Suite Q, Monmouth Junction, NJ 08852, USA