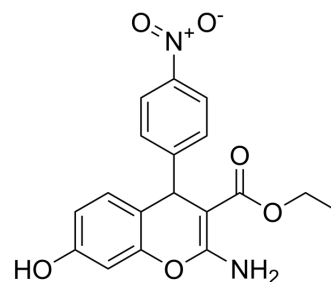


Aminopeptidase-IN-1

Cat. No.:	HY-151518
CAS No.:	374102-08-6
Molecular Formula:	C ₁₈ H ₁₆ N ₂ O ₆
Molecular Weight:	356.33
Target:	Aminopeptidase
Pathway:	Metabolic Enzyme/Protease
Storage:	4°C, protect from light * In solvent : -80°C, 6 months; -20°C, 1 month (protect from light)



SOLVENT & SOLUBILITY

In Vitro	DMSO : 100 mg/mL (280.64 mM; Need ultrasonic)					
	Preparing Stock Solutions	Solvent Concentration	Mass			
			1 mg	5 mg	10 mg	
			1 mM	2.8064 mL	14.0319 mL	28.0639 mL
			5 mM	0.5613 mL	2.8064 mL	5.6128 mL
10 mM	0.2806 mL	1.4032 mL	2.8064 mL			
Please refer to the solubility information to select the appropriate solvent.						
In Vivo	1. Add each solvent one by one: 10% DMSO >> 40% PEG300 >> 5% Tween-80 >> 45% saline Solubility: ≥ 2.5 mg/mL (7.02 mM); Clear solution					

BIOLOGICAL ACTIVITY

Description	Aminopeptidase-IN-1 (compound 16o) is a potent insulin-regulated aminopeptidase (IRAP) inhibitor with an K _i value of 7.7 μM. Aminopeptidase-IN-1 can be used for research cognitive and memory impairments ^[1] .
IC ₅₀ & Target	K _i : 7.7 μM (IRAP) ^[1]

REFERENCES

[1]. Mountford SJ, et al. Synthesis, structure-activity relationships and brain uptake of a novel series of benzopyran inhibitors of insulin-regulated aminopeptidase. J Med Chem. 2014 Feb 27;57(4):1368-77.

Caution: Product has not been fully validated for medical applications. For research use only.

Tel: 609-228-6898

Fax: 609-228-5909

E-mail: tech@MedChemExpress.com

Address: 1 Deer Park Dr, Suite Q, Monmouth Junction, NJ 08852, USA