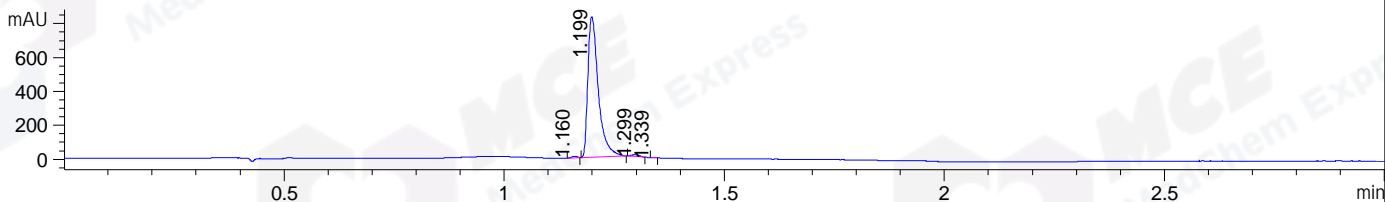
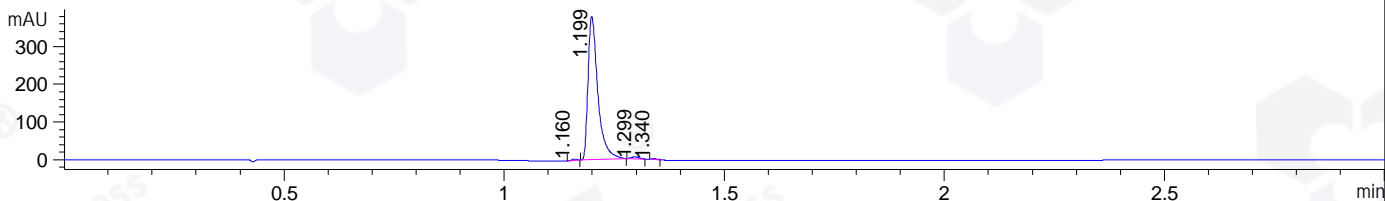


File ..1\DATA\2019\20190225\543\BIZ2019-222-WYQ5.D Tgt Mass (CHM):  
 Injection Date : 25 Feb 19 11:00 am +0800 Seq. Line : 20  
 Sample Name : BIZ2019-222-WYQ5 Location : P2-B-08  
 Acq. Operator : LQ\_1052 Inj : 1  
 Spec. Reported : MS Integration Inj Volume : 1 ul  
 Acq. Method : D:\Chem32\1\data\2019\20190225\543\1-POS-3MIN-1.M  
 Analysis Method : D:\CHEM32\1\DATA\2019\20190225\543\1-POS-3MIN-1.M  
 Catalog No : HY-15186 Batch#38383  
 Method Info : Mobile Phase: A: water(0.01%TFA) B:ACN(0.01%TFA)  
 Gradient: 5% to 95%B within 1.3 min  
 Flow Rate :1.8ml/min  
 Column :SunFire C18, 4.6\*50mm,3.5um A-RP-314  
 Oven Temperature : 45□

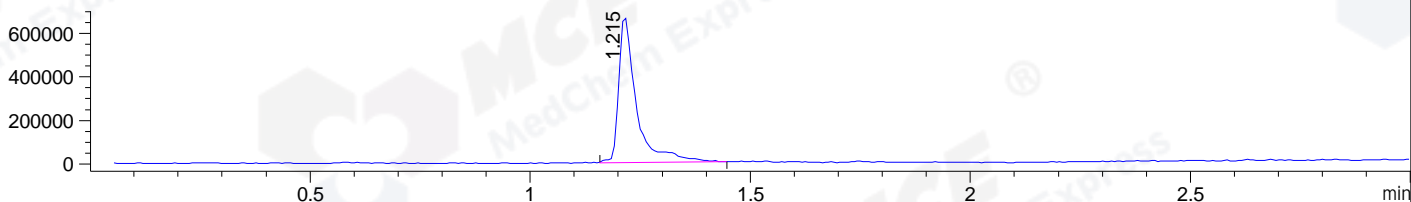
DAD1 B, Sig=214,4 Ref=off



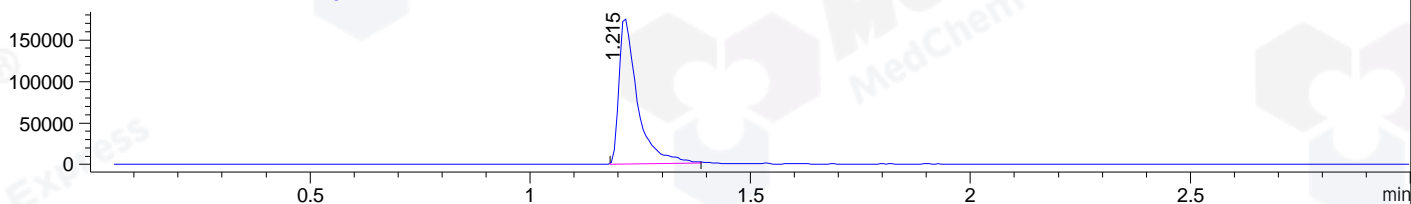
DAD1 C, Sig=254,4 Ref=off



MSD1 TIC, MS File ES-API, Pos, Scan, Frag: 70



Ion 458.2, MSD1 458.2, Target Mass 457.2 +H Positive, EIC=457.9:458.9



## Integration Results for DAD1 B, Sig=214,4 Ref=off

RetTim	Width	Area	Height	Area%	MS (+)
1.16	0.01	7.83	9.31	0.56	416
1.20	0.03	1368.66	830.34	98.42	230
1.30	0.02	13.64	11.06	0.98	458
1.34	0.01	0.57	1.06	0.04	458

## Integration Results for DAD1 C, Sig=254,4 Ref=off

RetTim	Width	Area	Height	Area%	MS (+)
1.16	0.01	2.86	3.57	0.48	416
1.20	0.03	587.42	379.96	98.27	230
1.30	0.02	6.09	4.82	1.02	458
1.34	0.01	1.39	1.82	0.23	458

## Integration Results for MSD1 TIC, MS File

RetTim	Width	Area	Height	Area%	MS (+)
1.22	0.04	1881985.13	672243.50	100.00	230

Ret. Time: 1.22

<<<< POSITIVE SPECTRA >>>>

ES-API Positive

