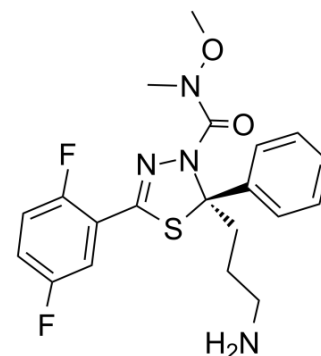


## (R)-Filanesib

<b>Cat. No.:</b>	HY-15187A		
<b>CAS No.:</b>	885060-08-2		
<b>Molecular Formula:</b>	C <sub>20</sub> H <sub>22</sub> F <sub>2</sub> N <sub>4</sub> O <sub>2</sub> S		
<b>Molecular Weight:</b>	420.48		
<b>Target:</b>	Kinesin		
<b>Pathway:</b>	Cell Cycle/DNA Damage; Cytoskeleton		
<b>Storage:</b>	Powder	-20°C	3 years
		4°C	2 years
	In solvent	-80°C	6 months
		-20°C	1 month



### SOLVENT & SOLUBILITY

#### In Vitro

DMSO : ≥ 100 mg/mL (237.82 mM)  
 \* "≥" means soluble, but saturation unknown.

Preparing Stock Solutions	Solvent Concentration	Mass		
		1 mg	5 mg	10 mg
	1 mM	2.3782 mL	11.8912 mL	23.7823 mL
	5 mM	0.4756 mL	2.3782 mL	4.7565 mL
	10 mM	0.2378 mL	1.1891 mL	2.3782 mL

Please refer to the solubility information to select the appropriate solvent.

#### In Vivo

- Add each solvent one by one: 10% DMSO >> 40% PEG300 >> 5% Tween-80 >> 45% saline  
 Solubility: ≥ 3.75 mg/mL (8.92 mM); Clear solution
- Add each solvent one by one: 10% DMSO >> 90% corn oil  
 Solubility: ≥ 3.75 mg/mL (8.92 mM); Clear solution

### BIOLOGICAL ACTIVITY

#### Description

(R)-Filanesib ((R)-ARRY-520) is the R-enantiomer of Filanesib (HY-15187). Filanesib is a synthetic kinesin spindle protein (KSP) inhibitor with an IC<sub>50</sub> of 6 nM.

---

**Caution: Product has not been fully validated for medical applications. For research use only.**

Tel: 609-228-6898

Fax: 609-228-5909

E-mail: [tech@MedChemExpress.com](mailto:tech@MedChemExpress.com)

Address: 1 Deer Park Dr, Suite Q, Monmouth Junction, NJ 08852, USA