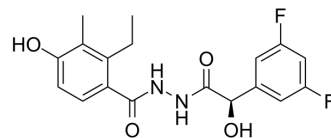


EMD638683 R-Form

Cat. No.:	HY-15193A		
CAS No.:	1184940-47-3		
Molecular Formula:	C ₁₈ H ₁₈ F ₂ N ₂ O ₄		
Molecular Weight:	364.34		
Target:	SGK		
Pathway:	Metabolic Enzyme/Protease		
Storage:	Powder	-20°C	3 years
		4°C	2 years
	In solvent	-80°C	2 years
		-20°C	1 year



SOLVENT & SOLUBILITY

In Vitro

DMSO : 66.67 mg/mL (182.99 mM; ultrasonic and warming and heat to 60°C)

Concentration	Solvent	Mass		
		1 mg	5 mg	10 mg
Preparing Stock Solutions	1 mM	2.7447 mL	13.7234 mL	27.4469 mL
	5 mM	0.5489 mL	2.7447 mL	5.4894 mL
	10 mM	0.2745 mL	1.3723 mL	2.7447 mL

Please refer to the solubility information to select the appropriate solvent.

In Vivo

- Add each solvent one by one: 10% DMSO >> 40% PEG300 >> 5% Tween-80 >> 45% saline
Solubility: 3.33 mg/mL (9.14 mM); Clear solution; Need ultrasonic
- Add each solvent one by one: 10% DMSO >> 90% (20% SBE-β-CD in saline)
Solubility: 3.33 mg/mL (9.14 mM); Clear solution; Need ultrasonic
- Add each solvent one by one: 10% DMSO >> 90% corn oil
Solubility: 3.33 mg/mL (9.14 mM); Clear solution; Need ultrasonic

BIOLOGICAL ACTIVITY

Description

EMD638683 R-Form is the R-form of EMD638683. EMD638683 is a highly selective SGK1 inhibitor with IC₅₀ of 3 μM.

IC₅₀ & Target

SGK1^[1]

CUSTOMER VALIDATION

-
- Neurobiol Dis. 2021 Feb 24;105317.
 - bioRxiv. 2020 Apr.

See more customer validations on www.MedChemExpress.com

REFERENCES

[1]. Ackermann TF, et al. EMD638683, a novel SGK inhibitor with antihypertensive potency. Cell Physiol Biochem. 2011;28(1):137-46.

Caution: Product has not been fully validated for medical applications. For research use only.

Tel: 609-228-6898

Fax: 609-228-5909

E-mail: tech@MedChemExpress.com

Address: 1 Deer Park Dr, Suite Q, Monmouth Junction, NJ 08852, USA