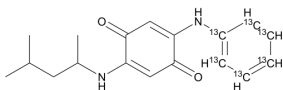


## 6PPD-quinone-<sup>13</sup>C<sub>6</sub>

Cat. No.: HY-152039S1  
Batch No.: 380018  
Chemical Name: 2-((4-Methylpentan-2-yl)amino)-5-((phenyl-<sup>13</sup>C<sub>6</sub>)amino)cyclohexa-2,5-diene-1,4-dione

### PHYSICAL AND CHEMICAL PROPERTIES

Molecular Formula: C<sub>12</sub><sup>13</sup>C<sub>6</sub>H<sub>22</sub>N<sub>2</sub>O<sub>2</sub>  
Molecular Weight: 304.34  
Storage: Solution, -20°C, 2 years  
Chemical Structure:



### ANALYTICAL DATA

Appearance: Colorless to light yellow (Liquid)  
Purity: ≥98.0%  
Isotopic Enrichment: 99%  
Conclusion: The product has been tested and complies with the given specifications.

**Caution: Product has not been fully validated for medical applications. For research use only.**

Tel: 609-228-6898

Fax: 609-228-5909

E-mail: tech@MedChemExpress.com

Address: 1 Deer Park Dr, Suite Q, Monmouth Junction, NJ 08852, USA