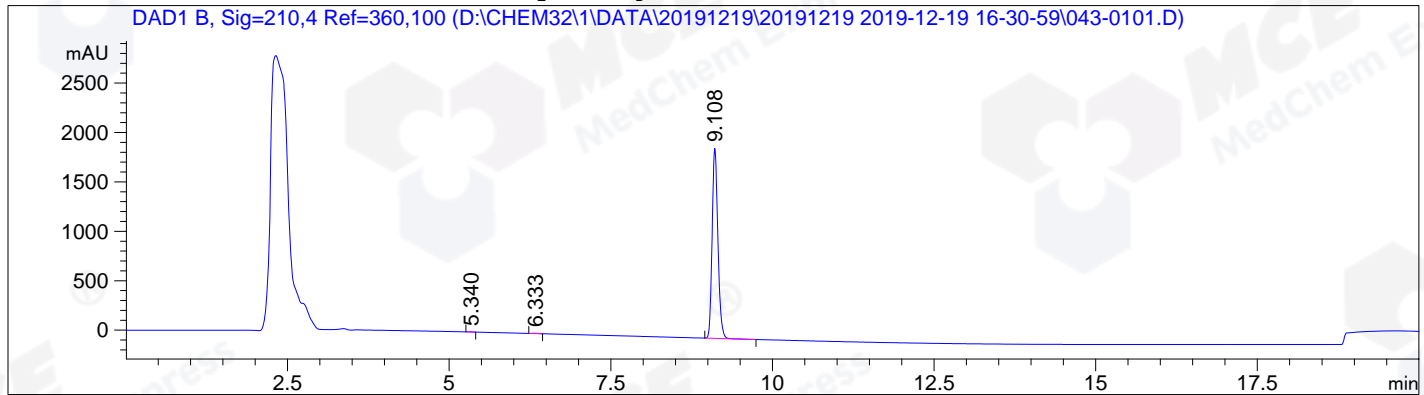


=====  
Acq. Operator : ZQQ Seq. Line : 1  
Acq. Instrument : HPLC-12 Location : Vial 43  
Injection Date : 12/19/2019 16:31:17 Inj : 1  
Inj Volume : 5.0 µl  
Acq. Method : D:\CHEM32\1\DATA\20191219\20191219 2019-12-19 16-30-59\HY-15206-H01P01 (RP-HPLC) .M  
Last changed : 12/19/2019 16:13:21 by ZQQ  
Analysis Method : D:\CHEM32\1\METHOD\HY-15206-H01P01 (RP-HPLC) .M  
Last changed : 12/19/2019 17:25:43 by ZQQ  
(modified after loading)  
Catalog No : HY-15206 Batch#11855  
A-RP-341

Additional Info : Peak(s) manually integrated



=====  
Area Percent Report  
=====

Sorted By : Signal  
Multiplier: : 1.0000  
Dilution: : 1.0000  
Use Multiplier & Dilution Factor with ISTDs

Signal 1: DAD1 B, Sig=210,4 Ref=360,100

Peak #	RetTime [min]	Type	Width [min]	Area [mAU*s]	Height [mAU]	Area %
1	5.340	MM	0.0803	5.26409	1.09264	0.0442
2	6.333	MM	0.0926	19.60669	3.52906	0.1645
3	9.108	BB	0.0941	1.18941e4	1923.52490	99.7913

Totals : 1.19189e4 1928.14660

=====  
\*\*\* End of Report \*\*\*