

File ..724 2017-07-24 08-55-16\CPK2017-724-07619.D Tgt Mass (CHM):

Injection Date : 24 Jul 17 5:57 pm +0800 Seq. Line : 116

Sample Name : CPK2017-724-07619 Location : P2-E-01

Acq. Operator : ZLJ\_587 Inj : 1

Spec. Reported : MS Integration Inj Volume : 1 ul

Acq. Method : D:\chem32\1\DATA\20170724\20170724 2017-07-24 08-55-16\1-POS-3MIN.M

Analysis Method : D:\CHEM32\1\DATA\20170724\20170724 2017-07-24 08-55-16\1-POS-3MIN.M

Catalog No : HY-15217 Batch#07619 A-RP-186

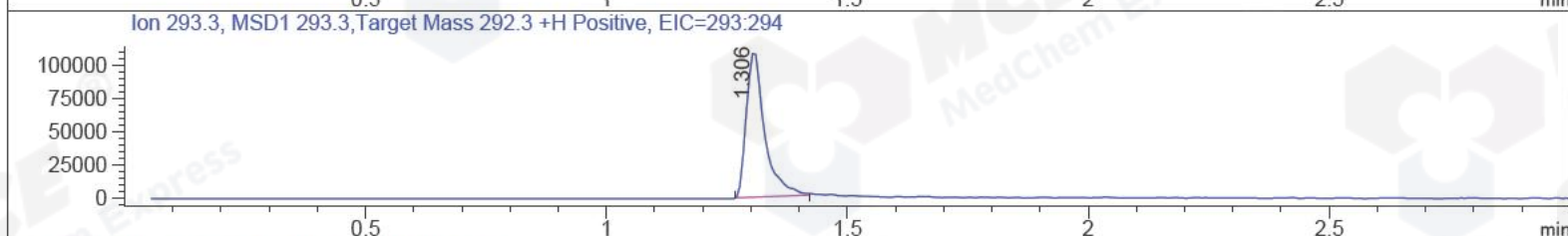
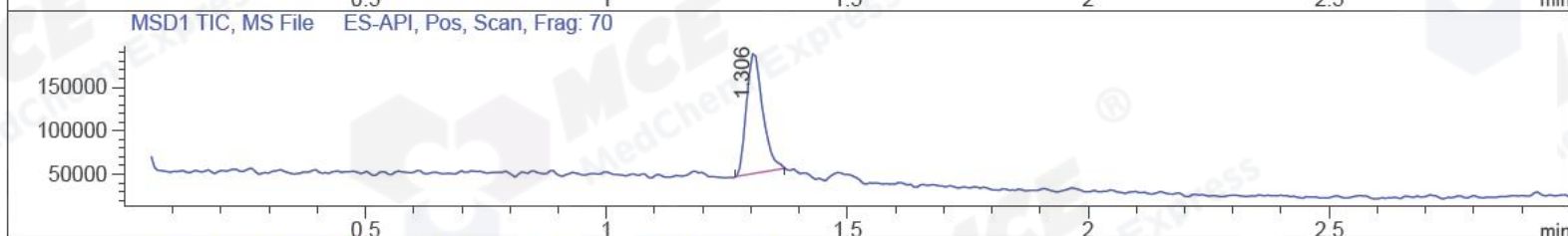
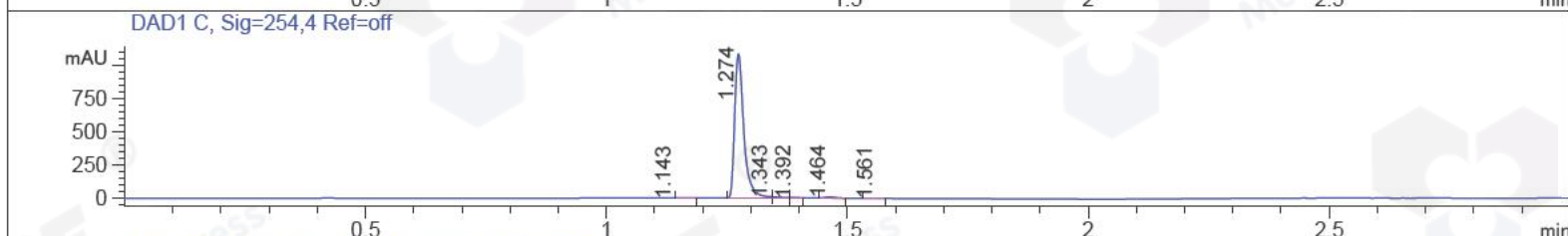
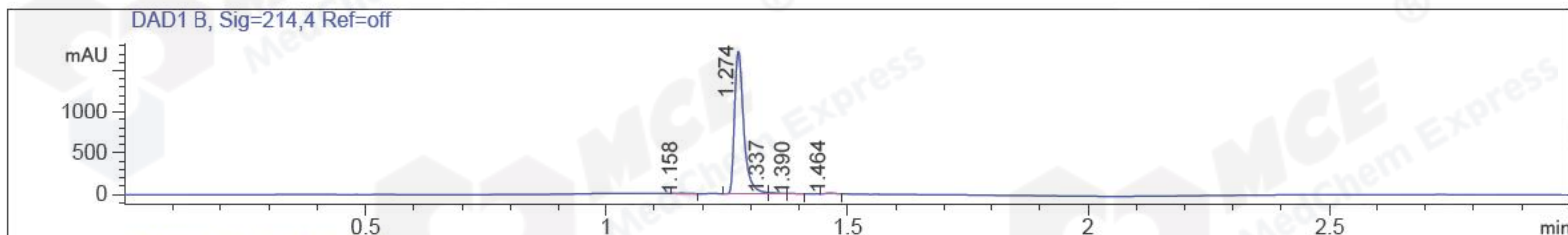
Method Info : Mobile Phase: A: water(0.01%TFA) B:ACN(0.01%TFA)

Gradient: 5% to 95%B within 1.3 min

Flow Rate :1.8ml/min

Column :SunFire C18, 4.6\*50mm,3.5um A-RP-186

Oven Temperature : 45C



Integration Results for DAD1 B, Sig=214,4 Ref=off

RetTim	Width	Area	Height	Area%	MS (+)
1.16	0.02	6.79	5.48	0.29	245
1.27	0.02	2280.99	1721.71	98.12	293
1.34	0.02	18.59	14.24	0.80	293
1.39	0.02	4.02	3.05	0.17	245
1.46	0.02	14.21	11.79	0.61	245

Integration Results for DAD1 C, Sig=254,4 Ref=off

RetTim	Width	Area	Height	Area%	MS (+)
1.14	0.02	1.96	0.13	0.13	245
1.27	0.02	1429.73	1077.65	98.00	293
1.34	0.02	11.24	8.97	0.77	293
1.39	0.02	3.55	2.93	0.24	245
1.46	0.02	11.42	9.19	0.78	245
1.56	0.02	1.01	0.83	0.07	245

Integration Results for MSD1 TIC, MS File

1.31 0.04 325570.50 141204.67 100.00 293

RetTim	Width	Area	Height	Area%	MS(+)
--------	-------	------	--------	-------	-------

Ret. Time: 1.31

<<<< POSITIVE SPECTRA >>>>

