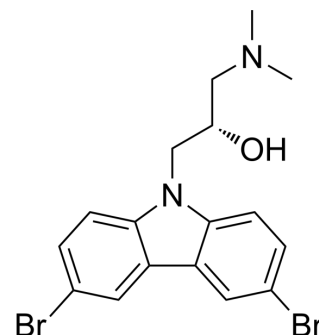


Clathrin-IN-2

Cat. No.:	HY-152217
CAS No.:	2650733-69-8
Molecular Formula:	C ₁₇ H ₁₈ Br ₂ N ₂ O
Molecular Weight:	426.15
Target:	Dynamin
Pathway:	Cytoskeleton
Storage:	Please store the product under the recommended conditions in the Certificate of Analysis.



BIOLOGICAL ACTIVITY

Description	Clathrin-IN-2 is potent inhibitor of clathrin mediated endocytosis (CME) with an IC ₅₀ value of 2.3 μM. Clathrin-IN-2 also has inhibitory for dyn I GTPase with an IC ₅₀ value of 7.7 μM ^[1] .
In Vitro	Clathrin-IN-2 (Compound 8a) can inhibit clathrin mediated endocytosis with an IC ₅₀ value of 2.3 μM ^[1] . Clathrin-IN-2 has inhibitory for dyn I GTPase with an IC ₅₀ value of 7.7 μM ^[1] . MCE has not independently confirmed the accuracy of these methods. They are for reference only.

REFERENCES

[1]. Peter J Cossar, et al. Wiskostatin and other carbazole scaffolds as off target inhibitors of dynamin I GTPase activity and endocytosis. Eur J Med Chem. 2022 Dec 15;247:115001.

Caution: Product has not been fully validated for medical applications. For research use only.

Tel: 609-228-6898

Fax: 609-228-5909

E-mail: tech@MedChemExpress.com

Address: 1 Deer Park Dr, Suite Q, Monmouth Junction, NJ 08852, USA