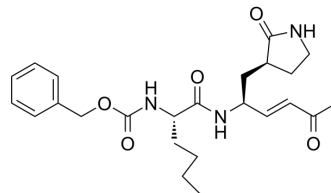


SPR38

Cat. No.:	HY-152222
Molecular Formula:	C ₂₄ H ₃₃ N ₃ O ₅
Molecular Weight:	443.54
Target:	SARS-CoV; Cathepsin
Pathway:	Anti-infection; Metabolic Enzyme/Protease
Storage:	Please store the product under the recommended conditions in the Certificate of Analysis.



BIOLOGICAL ACTIVITY

Description	SPR38 is a potent SARS-CoV-2 main protease inhibitor, with a K _i of 0.260 μM. SPR38 also inhibits hCatL and hCatB, with K _i values of 1.92 μM and 11.1 μM, respectively ^[1] .	
IC₅₀ & Target	cathepsin L 1.92 ± 0.1 μM (IC ₅₀)	Cathepsin B 11.1 ± 1.2 μM (IC ₅₀)
In Vitro	SPR38 shows no inhibition at 100 μM against SARS-CoV-2 papain-like protease (PL ^{Pro}), which plays a crucial role in processing viral polyproteins ^[1] . MCE has not independently confirmed the accuracy of these methods. They are for reference only.	

REFERENCES

[1]. Previti S, et al. Structure-based lead optimization of peptide-based vinyl methyl ketones as SARS-CoV-2 main protease inhibitors.

Caution: Product has not been fully validated for medical applications. For research use only.

Tel: 609-228-6898

Fax: 609-228-5909

E-mail: tech@MedChemExpress.com

Address: 1 Deer Park Dr, Suite Q, Monmouth Junction, NJ 08852, USA