

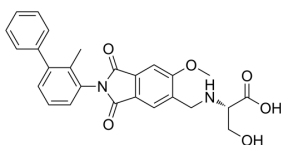
PD-1/PD-L1-IN-29

Cat. No.: HY-152240
CAS No.: 2665734-13-2
Batch No.: 313440
Chemical Name: L-Serine, N-[[[2,3-dihydro-6-methoxy-2-(2-methyl[1,1'-biphenyl]-3-yl)-1,3-dioxo-1H-isoindol-5-yl]methyl]-

PHYSICAL AND CHEMICAL PROPERTIES

Molecular Formula: C₂₆H₂₄N₂O₆
Molecular Weight: 460.48
Storage: Powder -20°C 3 years
In solvent -80°C 6 months
-20°C 1 month

Chemical Structure:



ANALYTICAL DATA

Appearance: White to light yellow (Solid)
¹H NMR Spectrum: Consistent with structure
LCMS: Consistent with structure
Purity (HPLC): 99.96%
Conclusion: The product has been tested and complies with the given specifications.

Caution: Product has not been fully validated for medical applications. For research use only.

Tel: 609-228-6898

Fax: 609-228-5909

E-mail: tech@MedChemExpress.com

Address: 1 Deer Park Dr, Suite Q, Monmouth Junction, NJ 08852, USA