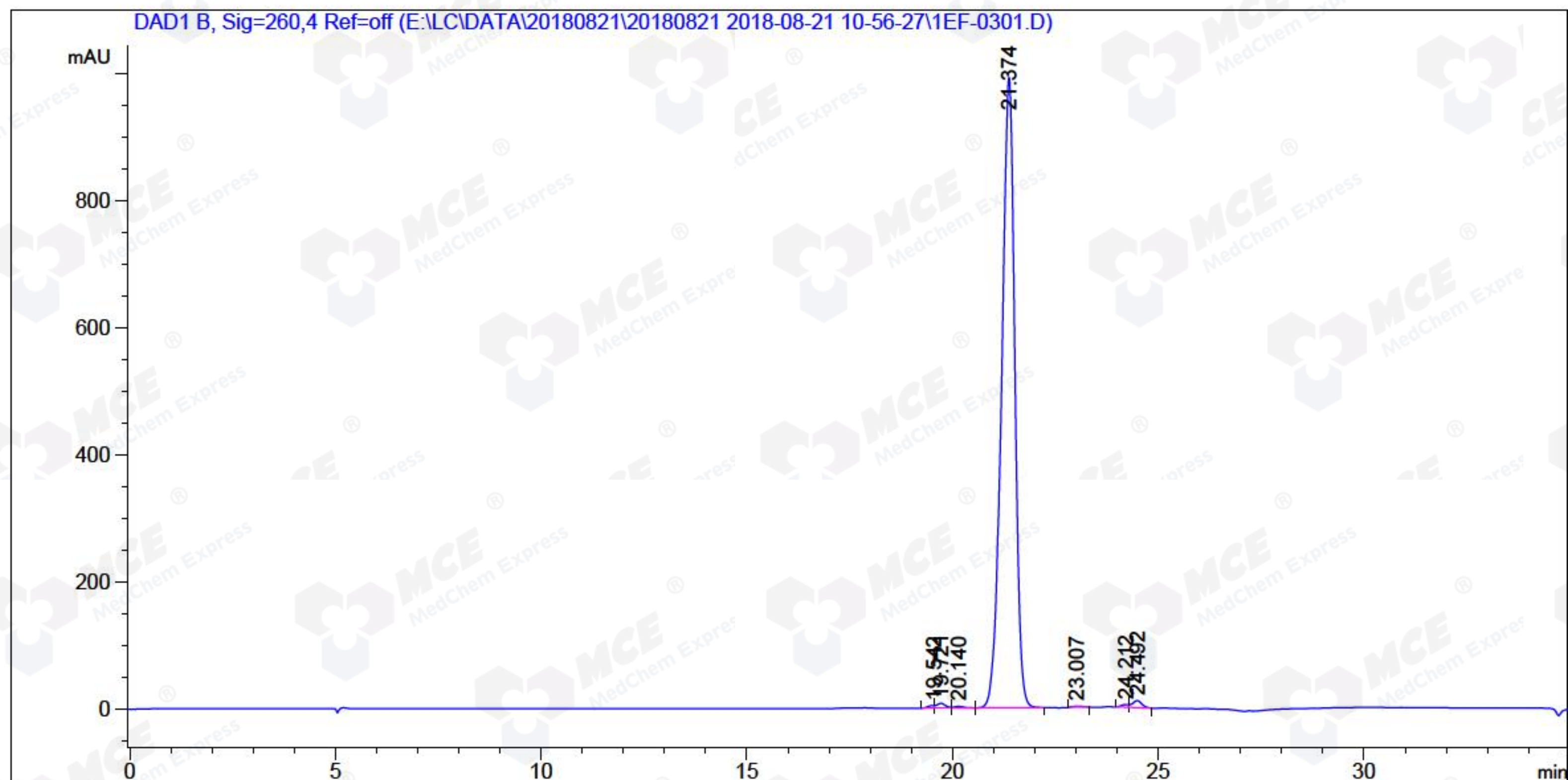


Sample Name: HP5434-060-2

```

=====
Acq. Operator   : ZDX                               Seq. Line :    3
Acq. Instrument : LCMS-01                          Location  : P1-E-06
Injection Date  : 8/21/2018 12:15:13 PM           Inj       :    1
                                                    Inj Volume: 5 µl
Different Inj Volume from Sequence ! Actual Inj Volume : 14 µl
Acq. Method     : E:\LC\DATA\20180821\20180821 2018-08-21 10-56-27\HM-369_16-H01P01 (RPHPLC) .M
Last changed    : 8/21/2018 10:56:25 AM by ZDX
Analysis Method : E:\LC\METHODS\HM-297D_9-H01P02 (RP-HPLC) .M
Last changed    : 8/21/2018 5:39:00 PM by ZDX
Catalog No     : HY-15229 Batch#32279
                A-RP-248
=====
  
```



Area Percent Report

```

Sorted By           :      Signal
Multiplier:         :      1.0000
Dilution:           :      1.0000
Use Multiplier & Dilution Factor with ISTDs
  
```

Signal 1: DAD1 B, Sig=260,4 Ref=off

Peak #	RetTime [min]	Type	Width [min]	Area [mAU*s]	Height [mAU]	Area %
1	19.542	MF	0.1720	37.96074	3.67752	0.1687
2	19.721	MF	0.2507	112.88514	7.50424	0.5017
3	20.140	FM	0.2764	38.74041	2.33587	0.1722
4	21.374	MM	0.3712	2.20665e4	990.66864	98.0622
5	23.007	MM	0.3005	19.25689	1.06792	0.0856
6	24.212	MF	0.1923	49.11806	4.25626	0.2183
7	24.492	FM	0.2701	178.09688	10.98860	0.7915

Totals : 2.25026e4 1020.49904

=====
*** End of Report ***