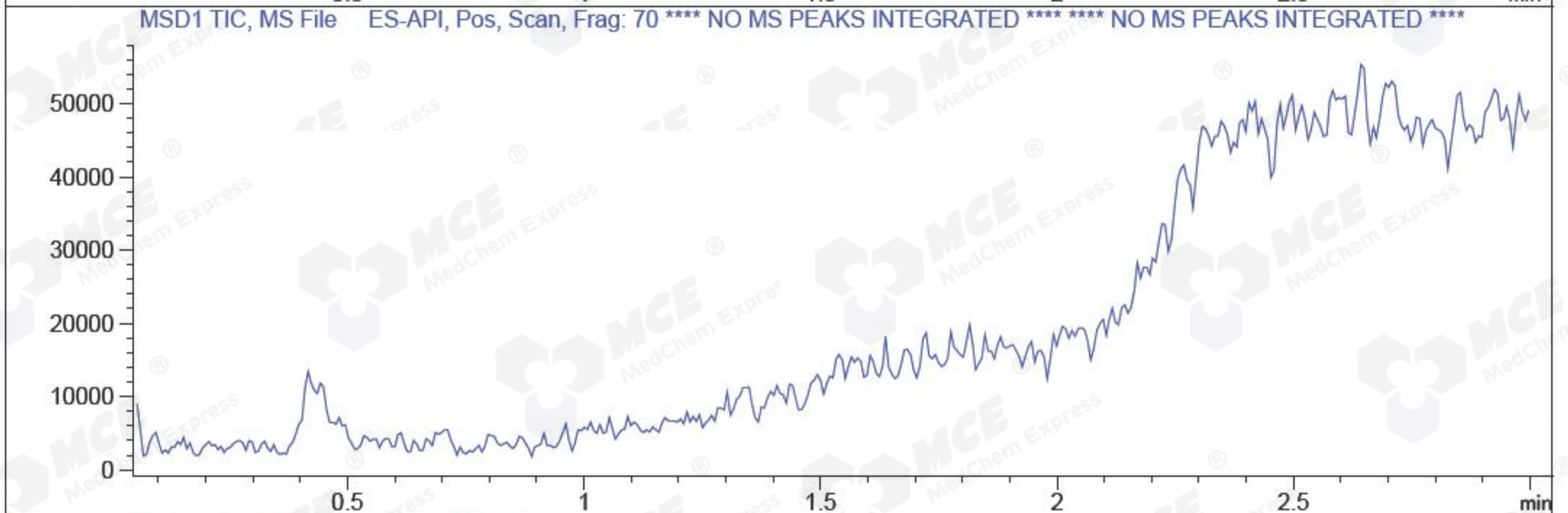
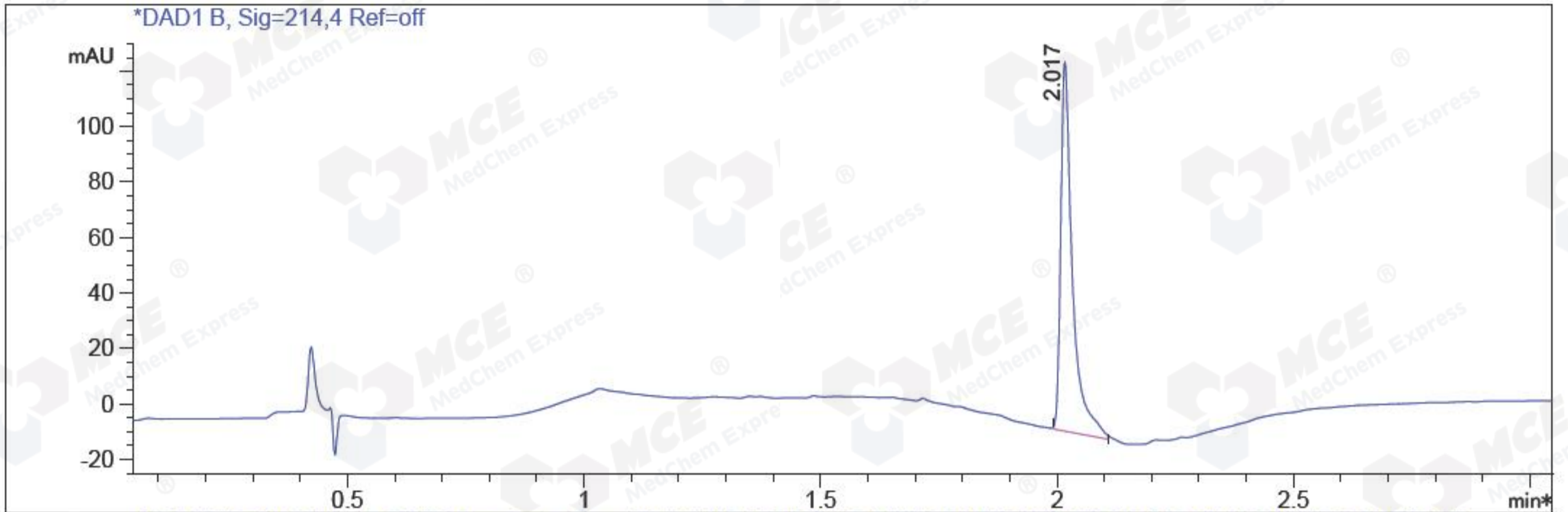


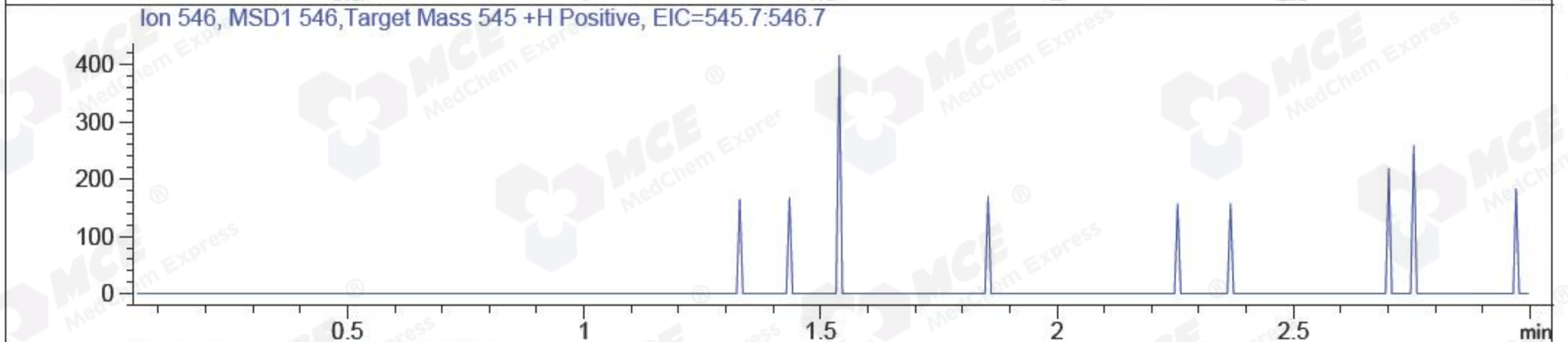
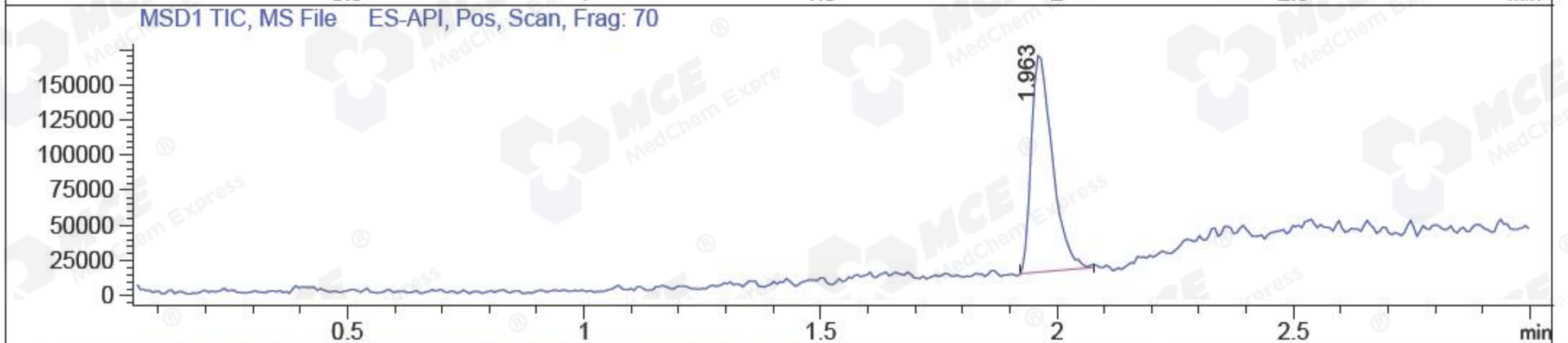
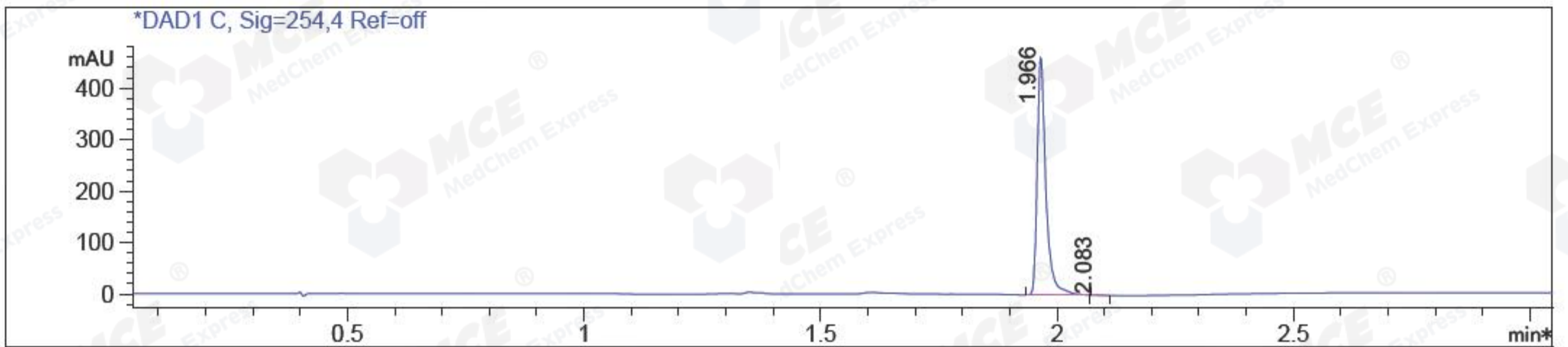
File D:\CHEM32\1\DATA\BIZ\BIZ2016-N01-WJ1-0.D Tgt Mass (EZ):  
 Injection Date : 1 Nov 16 1:18 pm +0800 Seq. Line : 0  
 Sample Name : BIZ2016-N01-WJ1-0 Location : P1-D-07  
 Acq. Operator : KFF(LCMS-02) Inj : 1  
 Spec. Reported : MS Integration Inj Volume : 1 ul  
 Acq. Method : D:\Chem32\1\METHODS\1-POS-3MIN.M  
 Analysis Method : D:\CHEM32\1\METHODS\1-POS-3MIN-PROSRSS.M  
 Catalog No : HY-15230 Batch#22291 Easy-Access Method: '1-POS-3MIN'  
 Method Info : Mobile Phase: A: water(0.01%TFA) B:ACN(0.01%TFA)  
 Gradient: 5% to 95%B within 1.3 min  
 Flow Rate :1.8ml/min  
 Column :SunFire C18, 4.6\*50mm,3.5um A-RP-186  
 Oven Temperature : 45C



Integration Results for DAD1 B, Sig=214,4 Ref=off

RetTim	Width	Area	Height	Area%	MS (+)
2.02	0.02	228.68	132.95	100.00	233

File D:\CHEM32\1\DATA\BIZ\BIZ2016-N01-WJ1.D Tgt Mass (EZX): 545.00  
 Injection Date : 1 Nov 16 1:23 pm +0800 Seq. Line : 0  
 Sample Name : BIZ2016-N01-WJ1 Location : P1-D-08  
 Acq. Operator : KFF(LCMS-02) Inj : 1  
 Spec. Reported : MS Integration Inj Volume : 1 ul  
 Acq. Method : D:\Chem32\1\METHODS\1-POS-3MIN.M  
 Analysis Method : D:\CHEM32\1\METHODS\1-POS-3MIN-PROSRSS.M  
 Catalog No : HY-15230 Batch#22291 Easy-Access Method: '1-POS-3MIN' 545.00  
 Method Info : Mobile Phase: A: water(0.01%TFA) B:ACN(0.01%TFA)  
 Gradient: 5% to 95%B within 1.3 min  
 Flow Rate :1.8ml/min  
 Column :SunFire C18, 4.6\*50mm,3.5um A-RP-186  
 Oven Temperature : 45C



Integration Results for DAD1 C, Sig=254,4 Ref=off

RetTim	Width	Area	Height	Area%	MS (+)
1.97	0.02	589.16	460.94	99.78	468
2.08	0.02	1.31	1.06	0.22	233

Ret. Time: 1.96

<<<< POSITIVE SPECTRA >>>>

