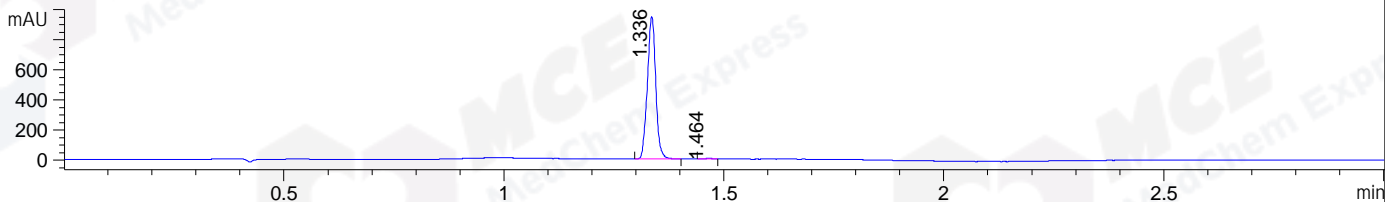
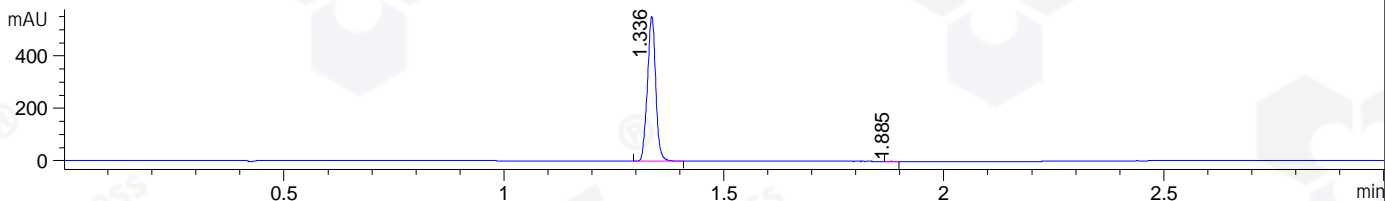


File ..\DATA\2020\20200328\898\CPK2020-324-16731.D Tgt Mass (CHM):  
 Injection Date : 28 Mar 20 5:04 pm +0800 Seq. Line : 93  
 Sample Name : CPK2020-324-16731 Location : P1-E-09  
 Acq. Operator : ZJ\_1432 Inj : 1  
 Spec. Reported : MS Integration Inj Volume : 1 ul  
 Acq. Method : D:\Chem32\1\data\2020\20200328\898\1-POS-3MIN.M  
 Analysis Method : D:\CHEM32\1\DATA\2020\20200328\898\1-POS-3MIN.M  
 Catalog No : HY-15232 Batch#16731  
 Method Info : Mobile Phase: A: water(0.01%TFA) B:ACN(0.01%TFA)  
 Gradient: 5% to 95%B within 1.3 min  
 Flow Rate :1.8ml/min  
 Column :SunFire C18, 4.6\*50mm,3.5um A-RP-433  
 Oven Temperature : 45□

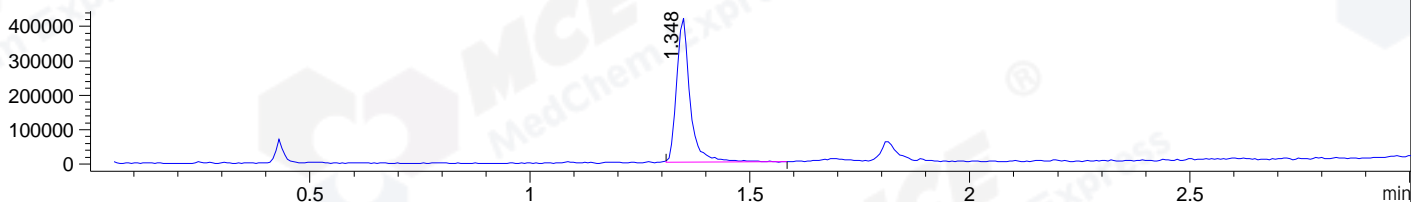
DAD1 B, Sig=214,4 Ref=off



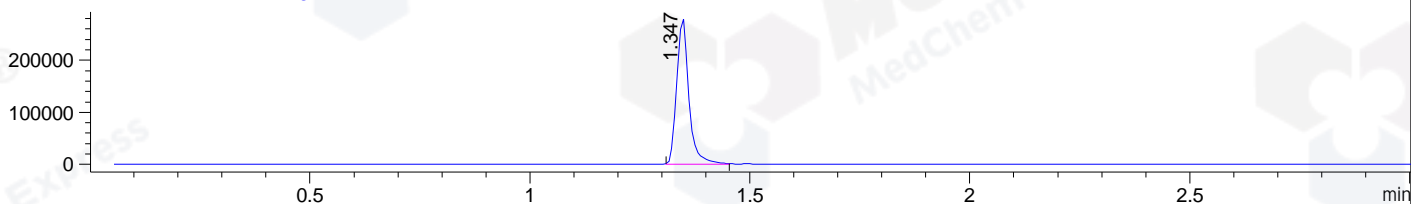
DAD1 C, Sig=254,4 Ref=off



MSD1 TIC, MS File ES-API, Pos, Scan, Frag: 70



Ion 477, MSD1 477, Target Mass 476 +H Positive, EIC=476.7:477.7



## Integration Results for DAD1 B, Sig=214,4 Ref=off

| RetTim | Width | Area    | Height | Area% | MS (+) |
|--------|-------|---------|--------|-------|--------|
| 1.34   | 0.02  | 1254.12 | 946.08 | 99.64 | 477    |
| 1.46   | 0.02  | 4.52    | 3.23   | 0.36  | 477    |

## Integration Results for DAD1 C, Sig=254,4 Ref=off

| RetTim | Width | Area   | Height | Area% | MS (+) |
|--------|-------|--------|--------|-------|--------|
| 1.34   | 0.02  | 727.88 | 553.51 | 99.92 | 477    |
| 1.89   | 0.02  | 0.56   | 0.54   | 0.08  | 313    |

## Integration Results for MSD1 TIC, MS File

| RetTim | Width | Area      | Height    | Area%  | MS (+) |
|--------|-------|-----------|-----------|--------|--------|
| 1.35   | 0.03  | 896369.94 | 420244.75 | 100.00 | 477    |

Ret. Time: 1.35

<<<< POSITIVE SPECTRA >>>>

ES-API Positive

