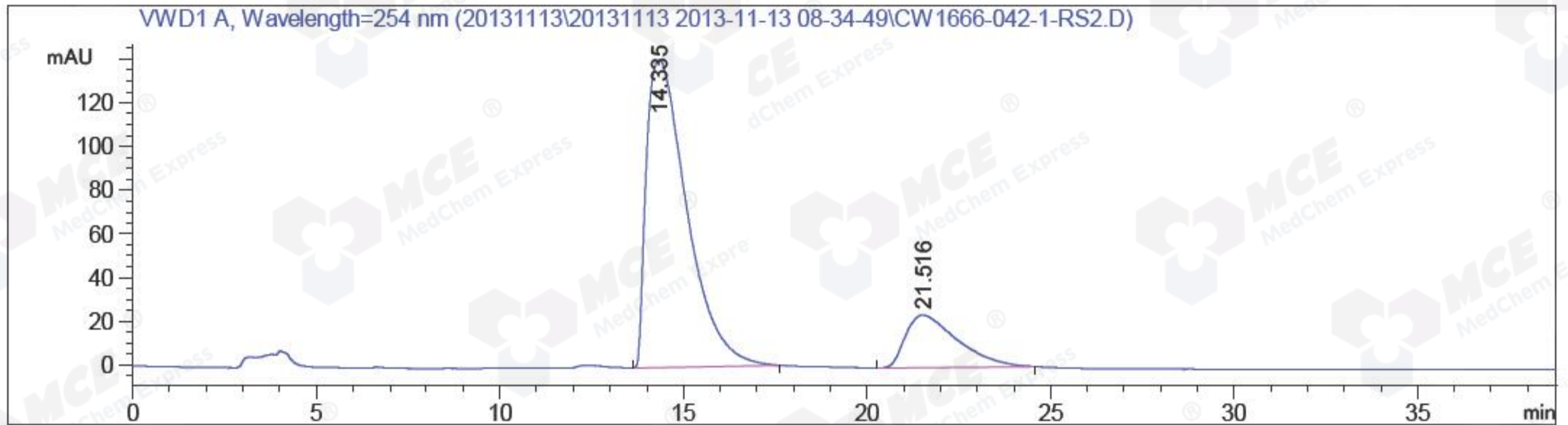


Sample Name: cw1666-042-1-RS2

```

=====
Acq. Operator   :                               Seq. Line :   13
Acq. Instrument : Instrument 1                 Location  : Vial 83
Injection Date  : 2013-11-13 04:14:40        Inj       :    1
                                                Inj Volume: 5 µl
Acq. Method    : E:\AGILENT\DATA\20131113\20131113 2013-11-13 08-34-49\90A_AB,254NM.M
Last changed   : 2013-11-13 04:53:39
                (modified after loading)
Analysis Method : E:\AGILENT\DATA\20131113\20131113 2013-11-13 08-34-49\CW1666-042-1-
                RS2.D\DA.M (90A_AB,254NM.M)
Last changed   : 2013-11-11 02:15:10
Catalog No.    : HY-15233 Batch#10114
                C-NP-12
=====
    
```



=====  
 Area Percent Report  
 =====

```

Sorted By      :      Signal
Multiplier     :      1.0000
Dilution       :      1.0000
Use Multiplier & Dilution Factor with ISTDs
    
```

Signal 1: VWD1 A, Wavelength=254 nm

Peak #	RetTime [min]	Type	Width [min]	Area mAU *s	Height [mAU]	Area %
1	14.335	BB	1.1635	1.08083e4	140.79071	81.9832
2	21.516	BB	1.1885	2375.24365	24.05359	18.0168

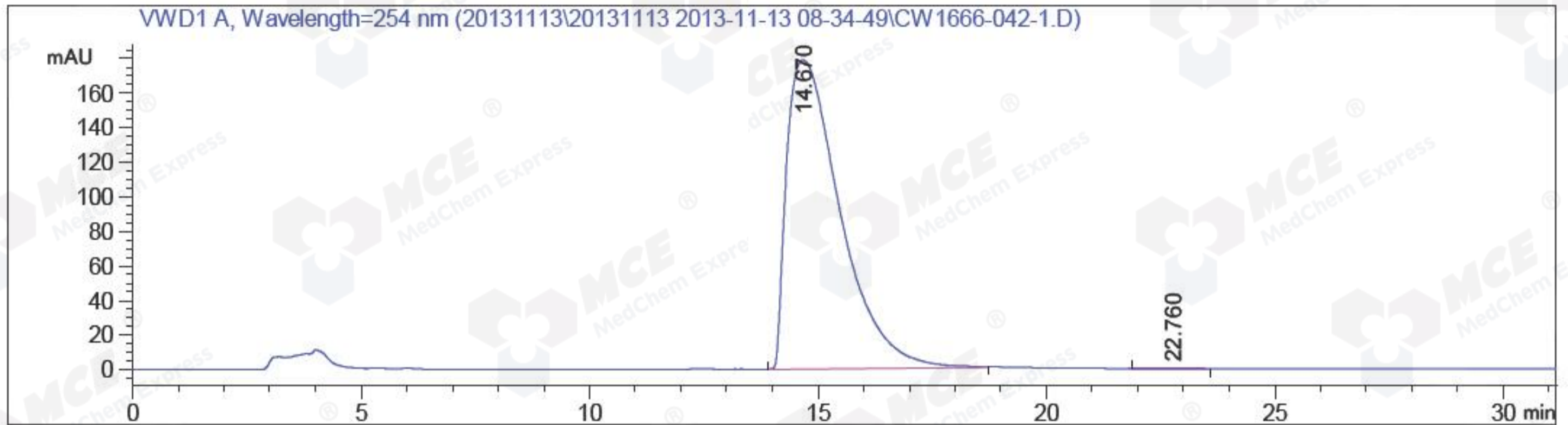
Totals :                      1.31835e4    164.84430

=====  
 \*\*\* End of Report \*\*\*

Sample Name: cw1666-042-1

```

=====
Acq. Operator   :                               Seq. Line :   14
Acq. Instrument : Instrument 1                 Location  : Vial 21
Injection Date  : 2013-11-13 04:54:57         Inj       :    1
                                                Inj Volume: 5 µl
Acq. Method     : E:\AGILENT\DATA\20131113\20131113 2013-11-13 08-34-49\90A_AB,254NM.M
Last changed    : 2013-11-13 05:26:19
                  (modified after loading)
Analysis Method : E:\AGILENT\DATA\20131113\20131113 2013-11-13 08-34-49\CW1666-042-1.D\
                  DA.M (90A_AB,254NM.M)
Last changed    : 2013-11-11 02:15:10
Catalog No.     : HY-15233 Batch#10114
                  C-NP-12
=====
    
```



Area Percent Report

```

=====
Sorted By      : Signal
Multiplier     : 1.0000
Dilution       : 1.0000
Use Multiplier & Dilution Factor with ISTDs
    
```

Signal 1: VWD1 A, Wavelength=254 nm

Peak #	RetTime [min]	Type	Width [min]	Area mAU *s	Height [mAU]	Area %
1	14.670	MM R	1.3569	1.45733e4	178.99803	99.8597
2	22.760	MM R	1.1768	20.47255	2.89946e-1	0.1403

Totals : 1.45938e4 179.28798

\*\*\* End of Report \*\*\*