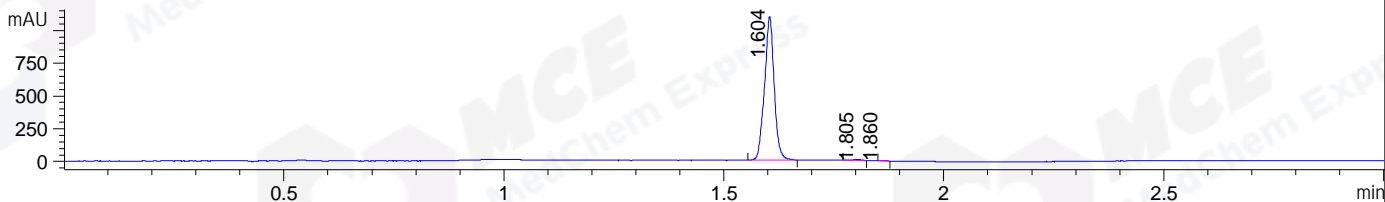
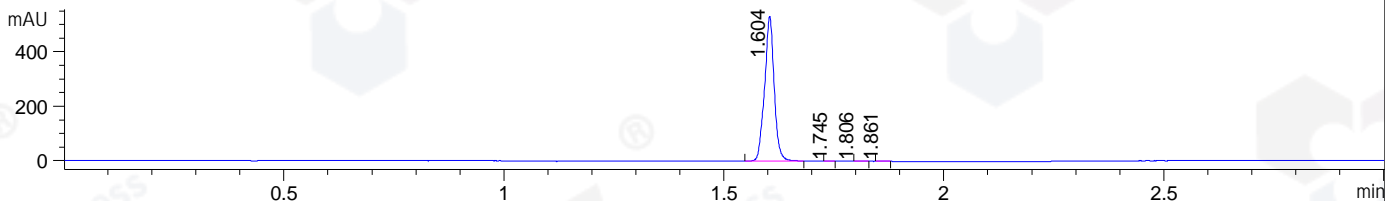


File ..\DATA\2020\20200328\898\CPK2020-325-06738.D Tgt Mass (CHM):  
 Injection Date : 28 Mar 20 2:23 pm +0800 Seq. Line : 59  
 Sample Name : CPK2020-325-06738 Location : P1-C-09  
 Acq. Operator : ZJ\_1432 Inj : 1  
 Spec. Reported : MS Integration Inj Volume : 1 ul  
 Acq. Method : D:\Chem32\1\data\2020\20200328\898\1-POS-3MIN.M  
 Analysis Method : D:\CHEM32\1\DATA\2020\20200328\898\1-POS-3MIN.M  
 Catalog No : HY-15241 Batch#06738  
 Method Info : Mobile Phase: A: water(0.01%TFA) B:ACN(0.01%TFA)  
 Gradient: 5% to 95%B within 1.3 min  
 Flow Rate :1.8ml/min  
 Column :SunFire C18, 4.6\*50mm,3.5um A-RP-433  
 Oven Temperature : 45□

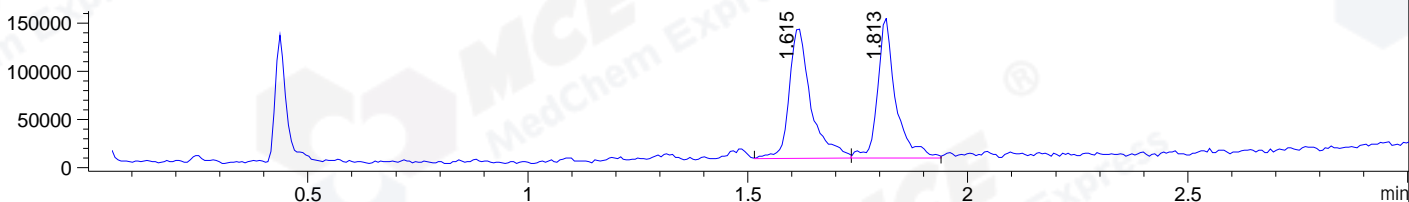
DAD1 B, Sig=214,4 Ref=off



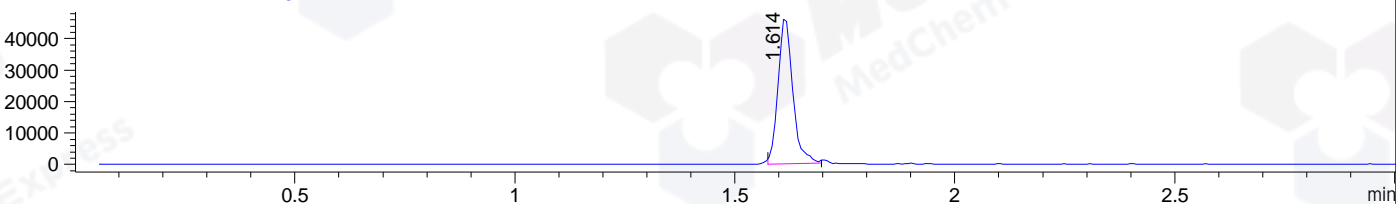
DAD1 C, Sig=254,4 Ref=off



MSD1 TIC, MS File ES-API, Pos, Scan, Frag: 70



Ion 460, MSD1 460, Target Mass 459 +H Positive, EIC=459.7:460.7



Integration Results for DAD1 B, Sig=214,4 Ref=off

RetTim	Width	Area	Height	Area%	MS (+)
1.60	0.03	1675.36	1094.87	99.20	460
1.80	0.02	11.97	8.60	0.71	175
1.86	0.01	1.51	1.95	0.09	175

Integration Results for DAD1 C, Sig=254,4 Ref=off

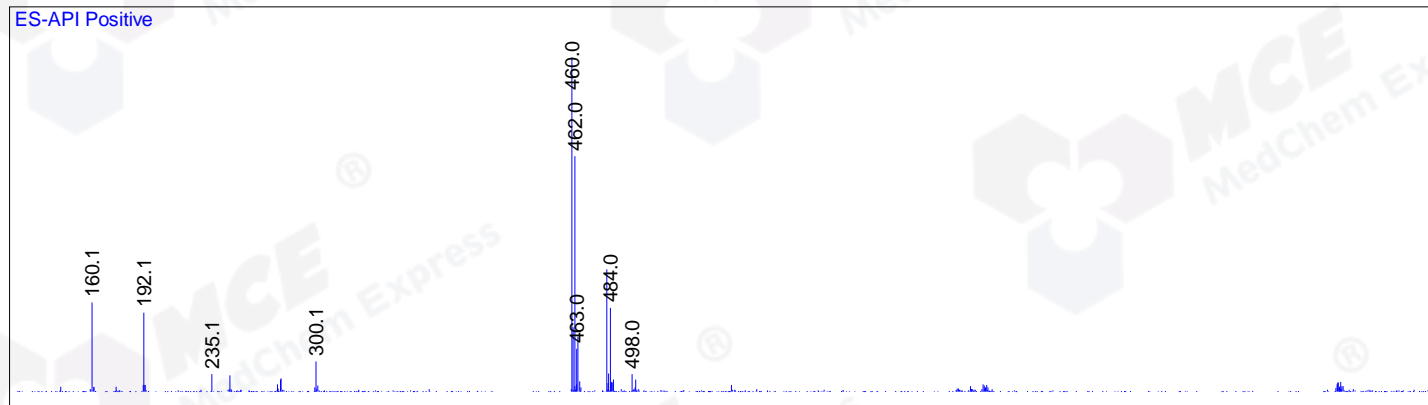
RetTim	Width	Area	Height	Area%	MS (+)
1.60	0.03	806.07	531.79	99.80	460
1.74	0.01	0.34	0.39	0.04	192
1.81	0.02	0.38	0.40	0.05	175
1.86	0.02	0.88	0.77	0.11	175

Integration Results for MSD1 TIC, MS File

RetTim	Width	Area	Height	Area%	MS (+)
1.61	0.05	464260.06	136033.08	52.55	460
1.81	0.04	419123.81	146695.08	47.45	175

Ret. Time: 1.61

<<<< POSITIVE SPECTRA >>>>



Ret. Time: 1.81

