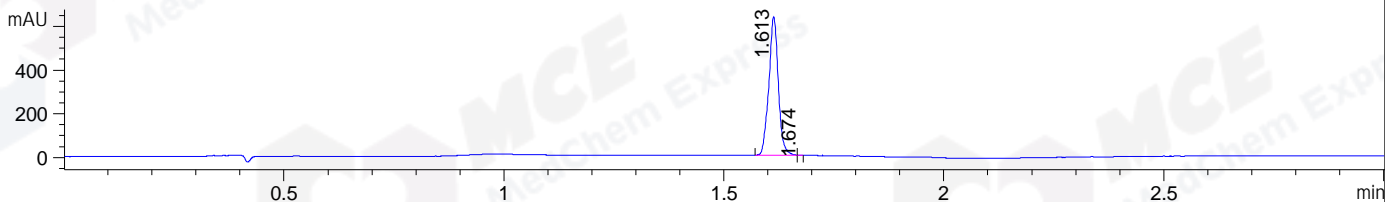
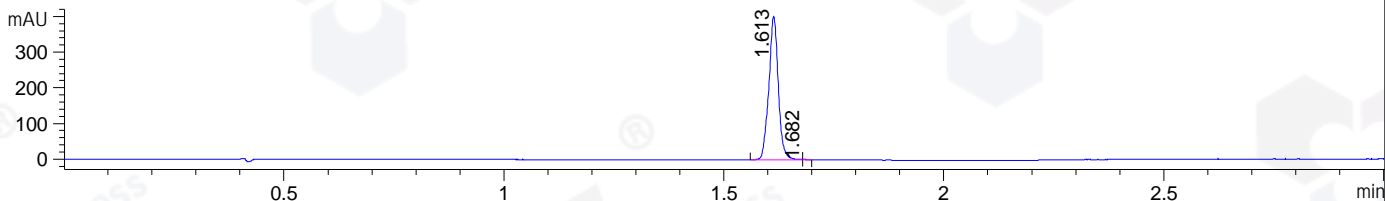


File ..\DATA\2020\20200328\898\BIZ2020-327-CXL1.D Tgt Mass (CHM):
 Injection Date : 28 Mar 20 1:09 pm +0800 Seq. Line : 44
 Sample Name : BIZ2020-327-CXL1 Location : P1-A-01
 Acq. Operator : ZJ_1432 Inj : 1
 Spec. Reported : MS Integration Inj Volume : 1.5 ul
 Acq. Method : D:\Chem32\1\data\2020\20200328\898\1-POS-3MIN.M
 Analysis Method : D:\CHEM32\1\DATA\2020\20200328\898\1-POS-3MIN.M
 Catalog No : HY-15244 Batch#61922
 Method Info : Mobile Phase: A: water(0.01%TFA) B:ACN(0.01%TFA)
 Gradient: 5% to 95%B within 1.3 min
 Flow Rate :1.8ml/min
 Column :SunFire C18, 4.6*50mm,3.5um A-RP-433
 Oven Temperature : 45□

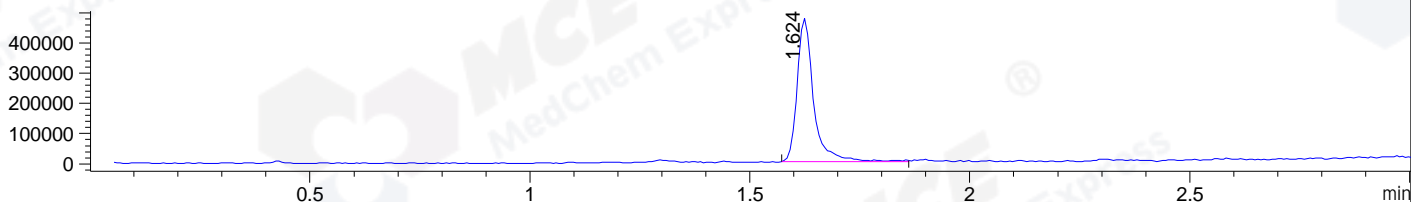
DAD1 B, Sig=214,4 Ref=off



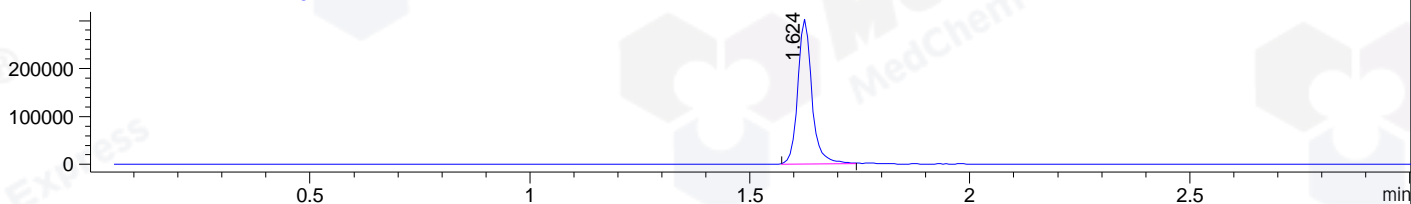
DAD1 C, Sig=254,4 Ref=off



MSD1 TIC, MS File ES-API, Pos, Scan, Frag: 70



Ion 442, MSD1 442, Target Mass 441 +H Positive, EIC=441.7:442.7



Integration Results for DAD1 B, Sig=214,4 Ref=off

RetTim	Width	Area	Height	Area%	MS (+)
1.61	0.02	948.07	636.22	99.95	442
1.67	0.01	0.46	0.90	0.05	442

Integration Results for DAD1 C, Sig=254,4 Ref=off

RetTim	Width	Area	Height	Area%	MS (+)
1.61	0.02	601.50	402.68	99.94	442
1.68	0.01	0.36	0.62	0.06	442

Integration Results for MSD1 TIC, MS File

RetTim	Width	Area	Height	Area%	MS (+)
1.62	0.04	1239929.13	475815.44	100.00	442

Ret. Time: 1.62

<<<< POSITIVE SPECTRA >>>>

ES-API Positive

