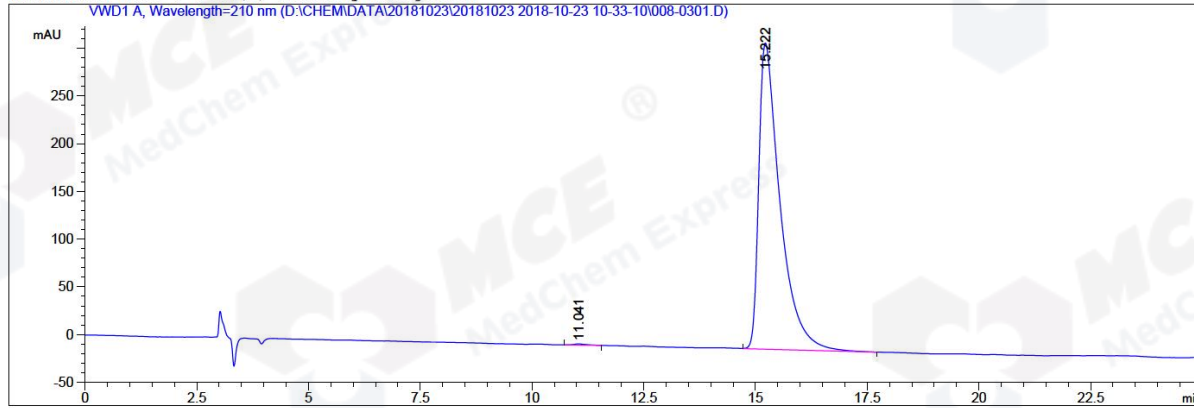


```
=====
Acq. Operator   : ZXM                               Seq. Line :   3
Acq. Instrument : HPLC-04                           Location  : Vial 8
Injection Date  : 10/23/2018 11:29:59 AM            Inj       :   1
                                                    Inj Volume: 5.0 µl
Acq. Method     : D:\CHEM\DATA\20181023\20181023 2018-10-23 10-33-10\AD, 90A-ETOH, 210NM, C1.M
Last changed    : 10/23/2018 11:08:05 AM by ZXM
                (modified after loading)
Analysis Method : D:\CHEM\METHODS\C2-5,80-ETOH, 210NM, C2.M
Last changed    : 10/23/2018 10:54:42 AM by ZXM
                (modified after loading)
Catalog No      : HY-15251 Batch#33694
                C-NP-30
=====
```

Additional Info : Peak(s) manually integrated



=====  
Area Percent Report  
=====

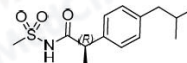
Sorted By : Signal  
Multiplier: : 1.0000  
Dilution: : 1.0000  
Do not use Multiplier & Dilution Factor with ISTDs

Signal 1: VWD1 A, Wavelength=210 nm

Peak #	RetTime [min]	Type	Width [min]	Area mAU *s	Height [mAU]	Area %
1	11.041	MM R	0.3527	26.98476	1.27512	0.2540
2	15.222	VB	0.4814	1.05950e4	320.78375	99.7460

Totals : 1.06220e4 322.05887

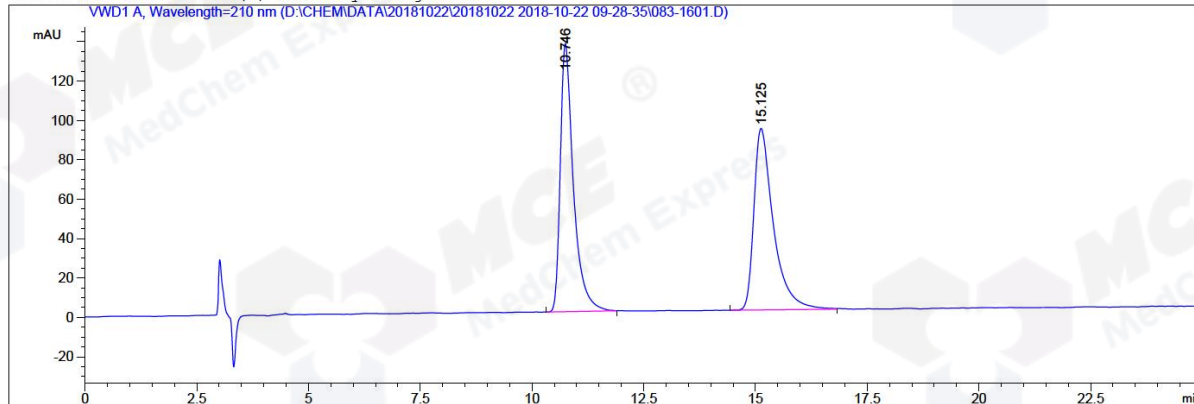
=====  
\*\*\* End of Report \*\*\*



=====

Acq. Operator : ZXM	Seq. Line : 16
Acq. Instrument : HPLC-04	Location : Vial 83
Injection Date : 10/22/2018 3:29:07 PM	Inj : 1
	Inj Volume : 5.0 µl
Different Inj Volume from Sequence !	Actual Inj Volume : 3.0 µl
Acq. Method : D:\CHEM\DATA\20181022\20181022 2018-10-22 09-28-35\AD, 90A-ETOH, 210NM, C1.M	
Last changed : 10/22/2018 3:24:29 PM by ZXM	
	(modified after loading)
Analysis Method : D:\CHEM\METHODS\IC, 83A-B, 210NM, C1.M	
Last changed : 10/22/2018 12:19:12 PM by ZXM	
	(modified after loading)
Catalog No : HY-15251 Batch#33694	
	C-NP-30

Additional Info : Peak(s) manually integrated  
VWD1 A, Wavelength=210 nm (D:\CHEM\DATA\20181022\20181022 2018-10-22 09-28-35\083-1601.D)



=====  
Area Percent Report  
=====

Sorted By : Signal  
Multiplier: : 1.0000  
Dilution: : 1.0000  
Use Multiplier & Dilution Factor with ISTDs

Signal 1: VWD1 A, Wavelength=210 nm

Peak #	RetTime [min]	Type	Width [min]	Area mAU *s	Height [mAU]	Area %
1	10.746	BB	0.3022	2775.40063	135.98959	49.7925
2	15.125	BV	0.4475	2798.53638	92.15413	50.2075

Totals : 5573.93701 228.14372

=====  
\*\*\* End of Report \*\*\*

