

File ..ata\20171102\20171102-1\CPK2017-N02-15209.D Tgt Mass (CHM):

Injection Date : 2 Nov 17 3:43 pm +0800 Seq. Line : 45

Sample Name : CPK2017-N02-15209 Location : P2-B-07

Acq. Operator : SYSTEM Inj : 1

Spec. Reported : MS Integration Inj Volume : 1 ul

Acq. Method : D:\LCMS03\Data\20171102\20171102-1\1-POS-3MIN.M

Analysis Method : D:\LCMS03\Data\20171102\20171102-1\1-POS-3MIN.M

Catalog No : HY-15278 Batch#15209

Method Info : Mobile Phase: A: water(0.01%TFA) B:ACN(0.01%TFA)

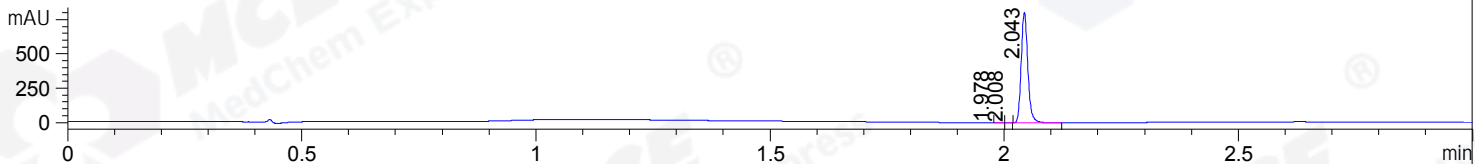
Gradient: 5% to 95%B within 1.3 min

Flow Rate :1.8ml/min

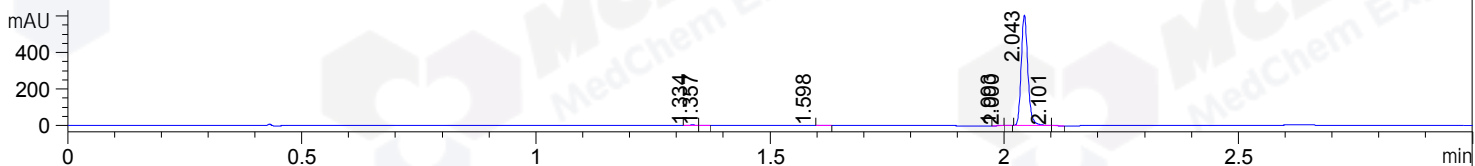
Column :SunFire C18, 4.6*50mm,3.5um A-RP-186

Oven Temperature : 45C

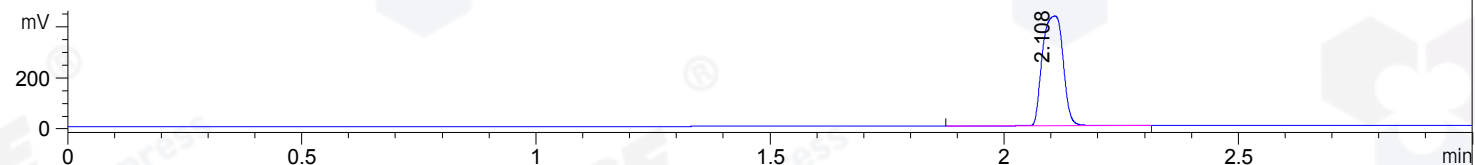
DAD1 A, Sig=214,4 Ref=off



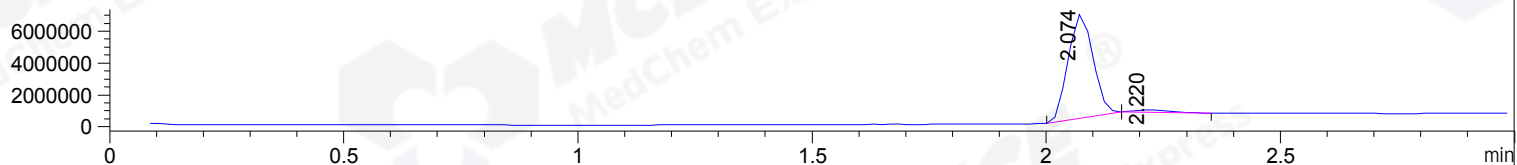
DAD1 B, Sig=254,4 Ref=off



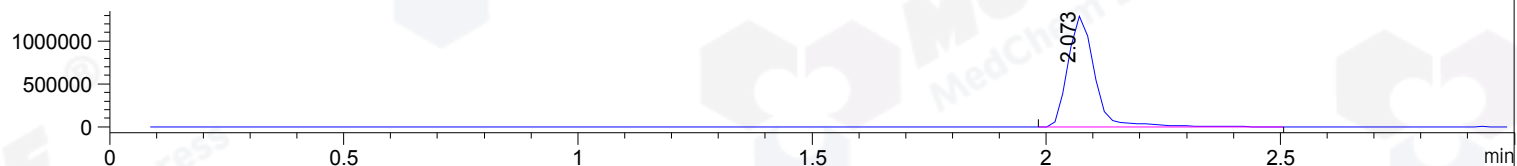
ELS1 A, ELSD Signal



MSD1 TIC, MS File ES-API, Pos, Scan, Frag: 70



Ion 492.7, MSD1 492.7, Target Mass 491.7 +H Positive, EIC=492.4:493.4



Integration Results for DAD1 A, Sig=214,4 Ref=off

RetTim	Width	Area	Height	Area%	MS (+)
1.98	0.01	1.71	0.18	0.21	102
2.01	0.01	0.90	1.29	0.11	492
2.04	0.02	793.76	803.04	99.67	492

Integration Results for DAD1 B, Sig=254,4 Ref=off

RetTim	Width	Area	Height	Area%	MS (+)
1.33	0.02	1.37	1.35	0.23	102
1.36	0.02	0.72	0.77	0.12	102
1.60	0.02	0.46	0.07	0.08	102
1.99	0.01	1.06	1.40	0.18	102
2.00	0.01	1.04	0.85	0.17	492
2.04	0.02	597.44	606.32	99.19	492
2.10	0.01	0.23	0.36	0.04	492

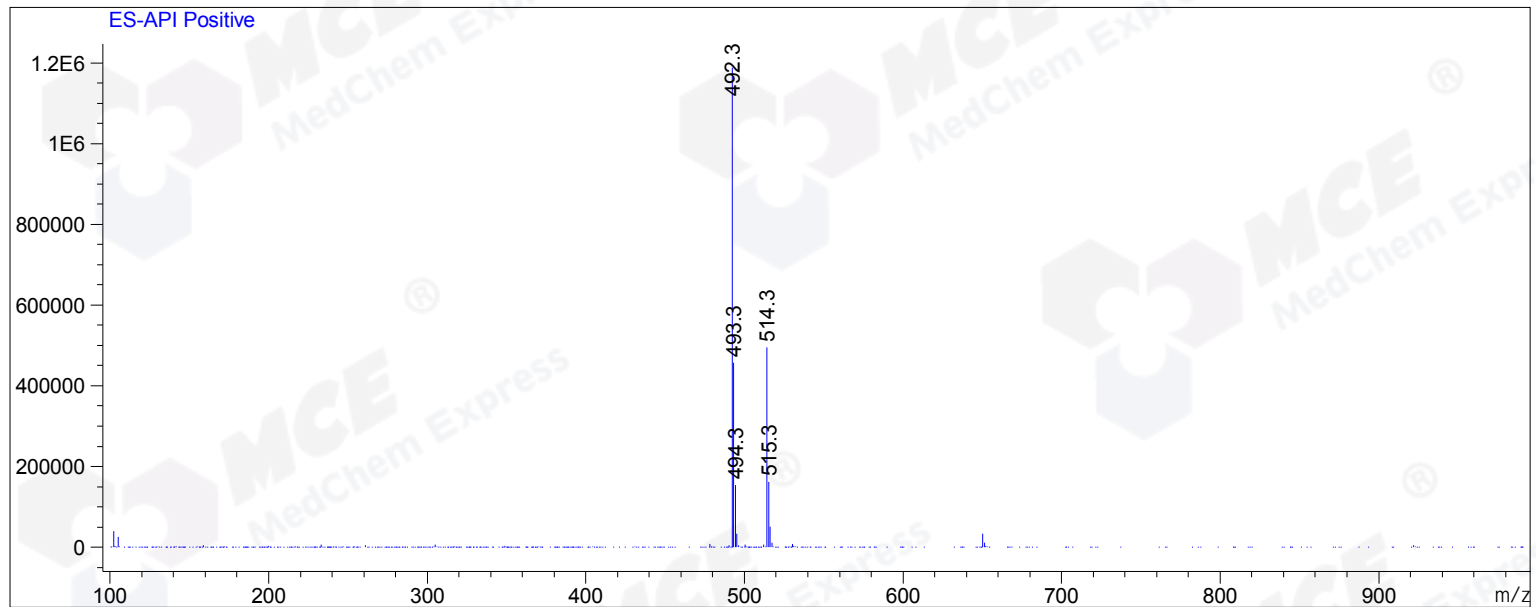
Integration Results for MSD1 TIC, MS File

RetTim	Width	Area	Height	Area%	MS (+)
--------	-------	------	--------	-------	--------

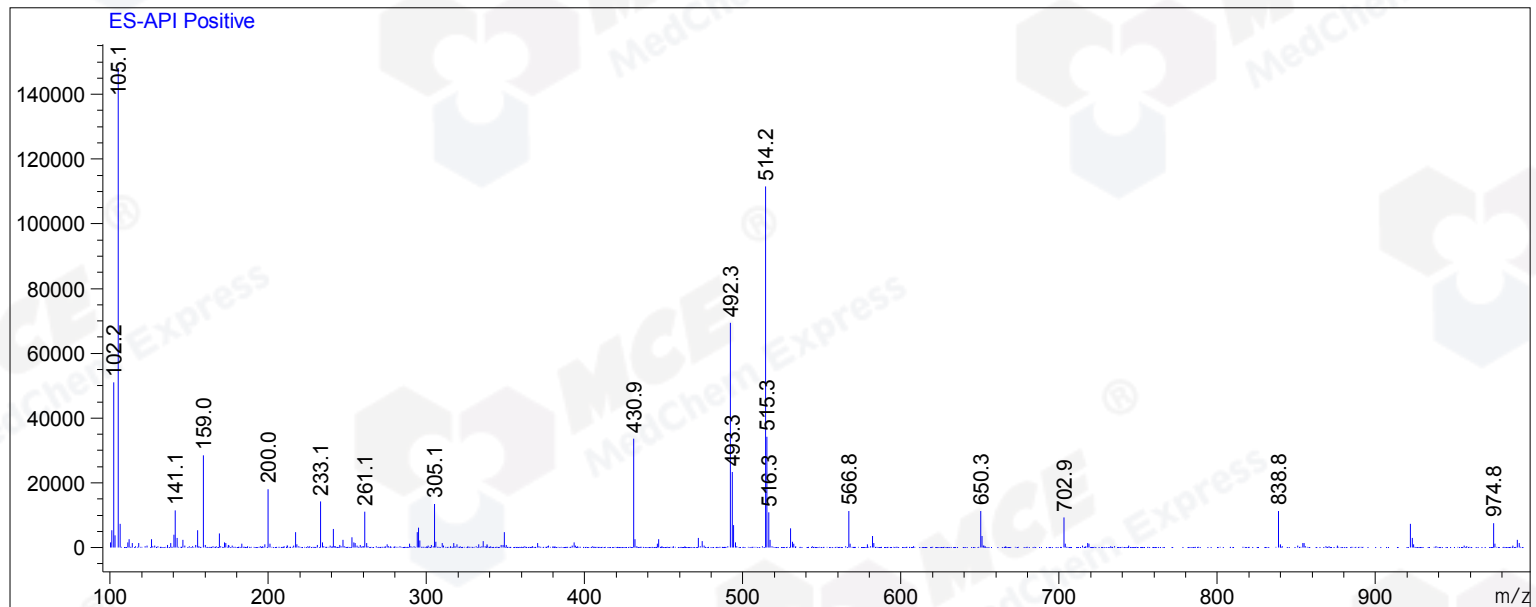
2.07	0.06	23886616.00	6516182.50	97.04	492
2.22	0.08	727642.38	136938.69	2.96	105

Ret. Time: 2.07

<<<< POSITIVE SPECTRA >>>>



Ret. Time: 2.22



*** End of Report ***