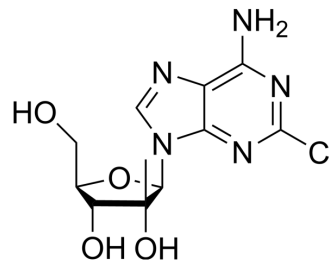


2-Chloro-2'-β-C-methyladenosine

Cat. No.:	HY-152812
CAS No.:	205171-11-5
Molecular Formula:	C ₁₁ H ₁₄ ClN ₅ O ₄
Molecular Weight:	315.71
Target:	Nucleoside Antimetabolite/Analog
Pathway:	Cell Cycle/DNA Damage
Storage:	Please store the product under the recommended conditions in the Certificate of Analysis.



BIOLOGICAL ACTIVITY

Description

2-Chloro-2'-β-C-methyladenosine is an adenosine analogue. Adenosine analogs mostly act as smooth muscle vasodilators and have also been shown to inhibit cancer progression. The popular products in this series are adenosine phosphate, Acadesine (HY-13417), Clofarabine (HY-A0005), Fludarabine phosphate (HY-B0028) and Vidarabine (HY-B0277)^[1].

REFERENCES

[1]. Man S, et al. Potential and promising anticancer drugs from adenosine and its analogs. Drug Discov Today. 2021 Jun;26(6):1490-1500.

Caution: Product has not been fully validated for medical applications. For research use only.

Tel: 609-228-6898

Fax: 609-228-5909

E-mail: tech@MedChemExpress.com

Address: 1 Deer Park Dr, Suite Q, Monmouth Junction, NJ 08852, USA