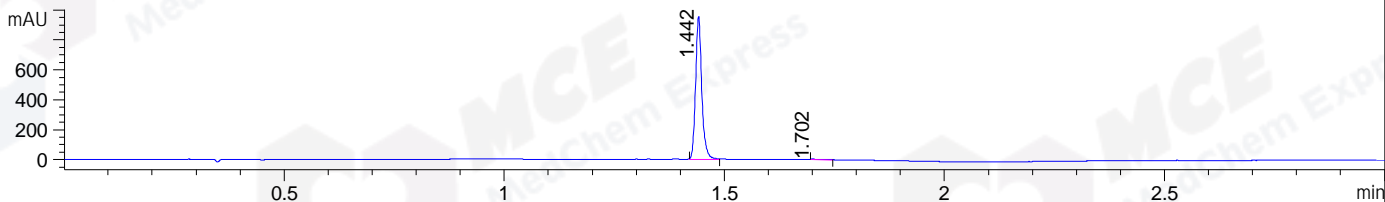
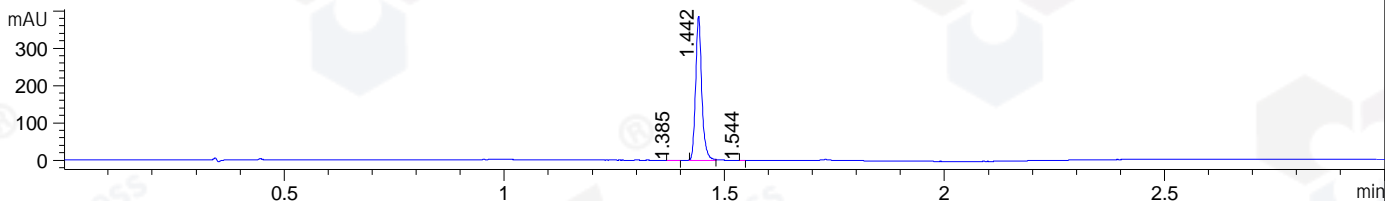


File ..1\DATA\2019\20190601\581\BIZ2019-531-WYQ5.D Tgt Mass (CHM):
 Injection Date : 1 Jun 19 10:23 am +0800 Seq. Line : 3
 Sample Name : BIZ2019-531-WYQ5 Location : P2-E-08
 Acq. Operator : ZJ_1432 Inj : 1
 Spec. Reported : MS Integration Inj Volume : 1 ul
 Acq. Method : D:\Chem32\1\data\2019\20190601\581\1-POS-3MIN.M
 Analysis Method : D:\CHEM32\1\DATA\2019\20190601\581\1-POS-3MIN.M
 Catalog No : HY-15284A Batch#41898
 Method Info : Mobile Phase: A: water(0.01%TFA) B:ACN(0.01%TFA)
 Gradient: 5% to 95%B within 1.3 min
 Flow Rate :1.8ml/min
 Column :SunFire C18, 4.6*50mm,3.5um A-RP-433
 Oven Temperature : 45□

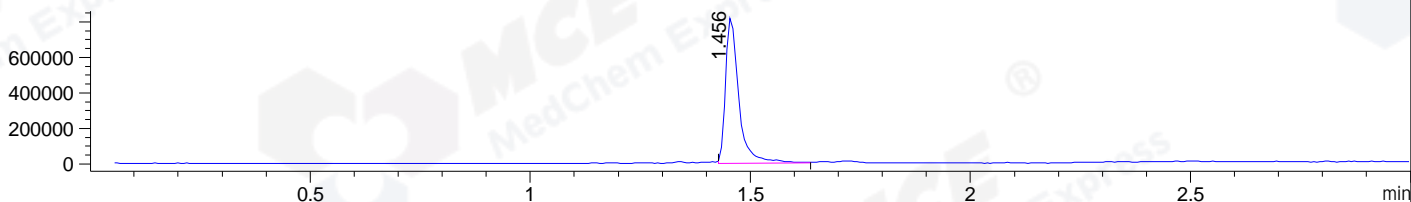
DAD1 B, Sig=214,4 Ref=off



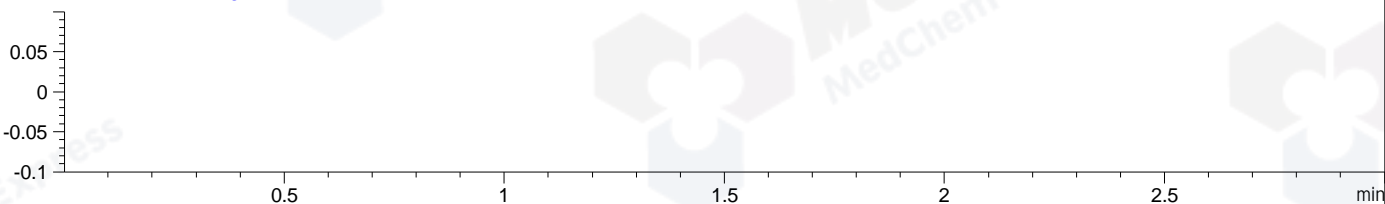
DAD1 C, Sig=254,4 Ref=off



MSD1 TIC, MS File ES-API, Pos, Scan, Frag: 70



Ion 1, MSD1 1, Target Mass 0 +H Positive, EIC=0.7:1.7



Integration Results for DAD1 B, Sig=214,4 Ref=off

RetTim	Width	Area	Height	Area%	MS (+)
1.44	0.01	928.00	954.36	99.57	374
1.70	0.03	3.99	2.03	0.43	374

Integration Results for DAD1 C, Sig=254,4 Ref=off

RetTim	Width	Area	Height	Area%	MS (+)
1.38	0.02	0.24	0.23	0.06	348
1.44	0.01	372.19	386.34	99.91	374
1.54	0.01	0.11	0.25	0.03	374

Integration Results for MSD1 TIC, MS File

RetTim	Width	Area	Height	Area%	MS (+)
1.46	0.03	1727465.75	823454.56	100.00	374

Ret. Time: 1.46

<<<< POSITIVE SPECTRA >>>>

ES-API Positive

