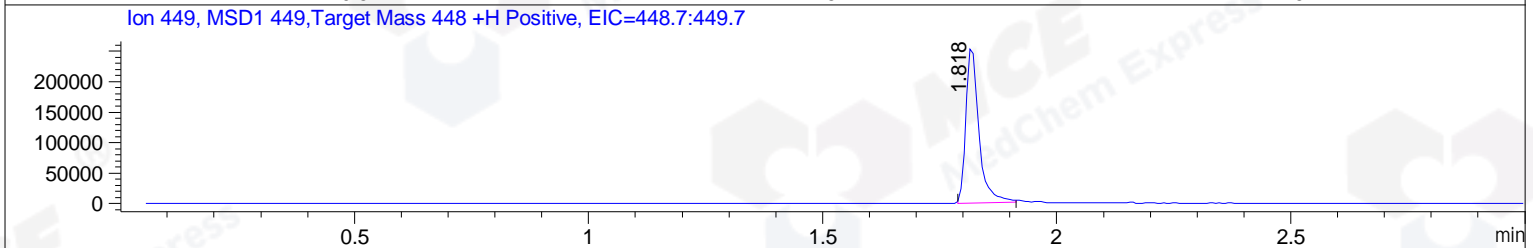
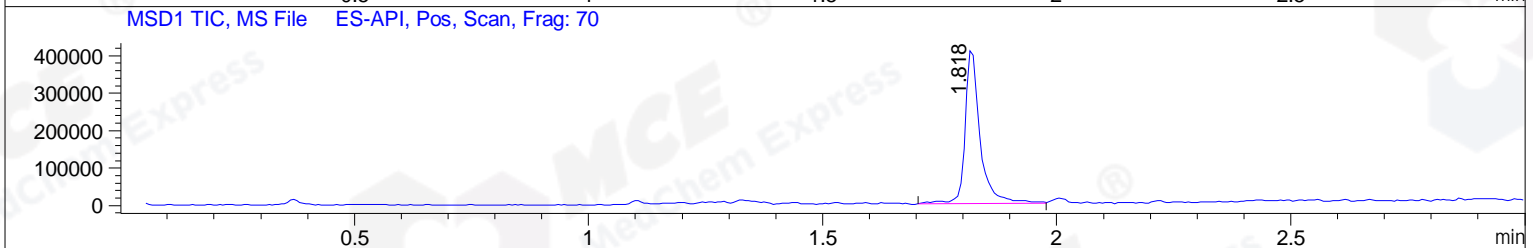
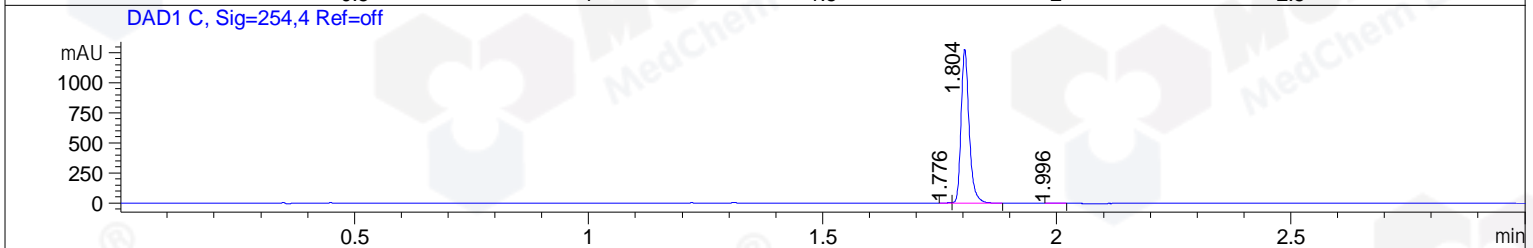
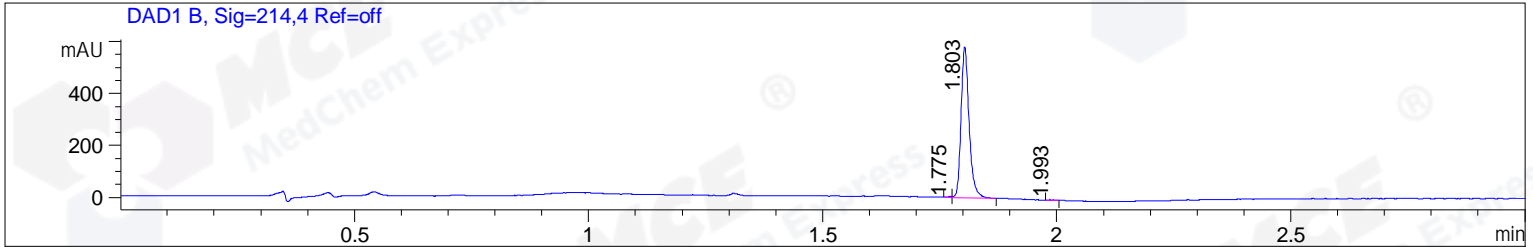


File ..\DATA\2020\20200324\891\CPK2020-323-06388.D Tgt Mass (CHM):
 Injection Date : 24 Mar 20 9:23 pm +0800 Seq. Line : 40
 Sample Name : CPK2020-323-06388 Location : PL-D-03
 Acq. Operator : ZJ_1432 Inj : 1
 Spec. Reported : MS Integration Inj Volume : 2 ul
 Acq. Method : D:\Chem32\1\data\2020\20200324\891\1-POS-3MIN.M
 Analysis Method : D:\CHEM32\1\DATA\2020\20200324\891\1-POS-3MIN.M
 Catalog No : HY-15291 Batch#06388
 Method Info : Mobile Phase: A: water(0.01%TFA) B:ACN(0.01%TFA)
 Gradient: 5% to 95%B within 1.3 min
 Flow Rate :1.8ml/min
 Column :SunFire C18, 4.6*50mm,3.5um A-RP-433
 Oven Temperature : 45



Integration Results for DAD1 B, Sig=214,4 Ref=off

RetTim	Width	Area	Height	Area%	MS (+)
1.78	0.01	2.47	4.28	0.36	421
1.80	0.02	690.47	580.29	99.40	449
1.99	0.02	1.67	1.57	0.24	435

Integration Results for DAD1 C, Sig=254,4 Ref=off

RetTim	Width	Area	Height	Area%	MS (+)
1.78	0.01	4.19	6.96	0.27	267
1.80	0.02	1536.06	1282.38	99.54	449
2.00	0.02	2.86	2.65	0.19	435

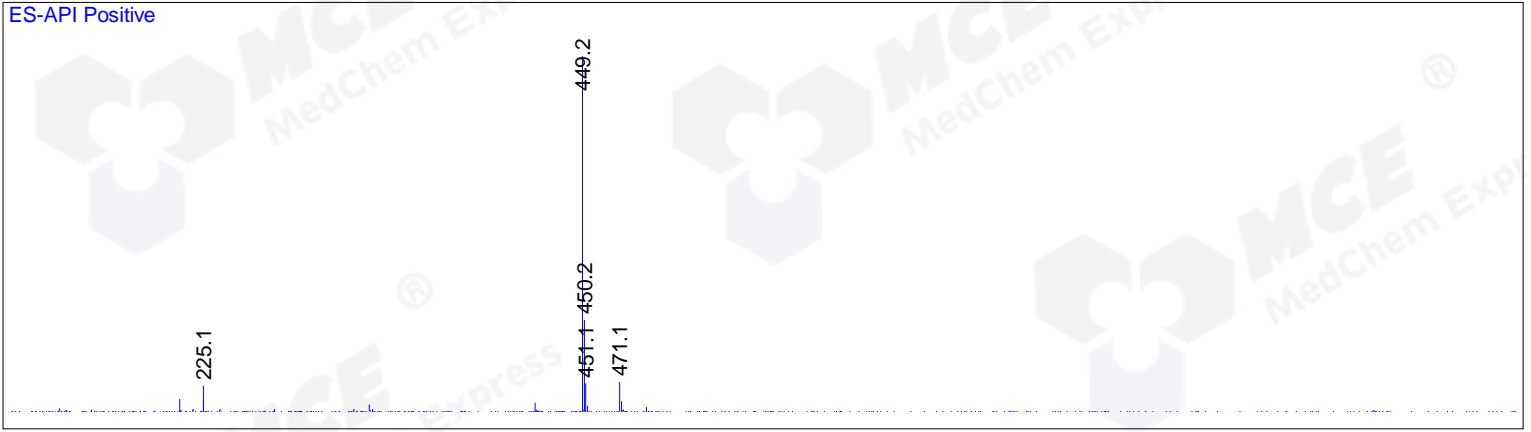
Integration Results for MSD1 TIC, MS File

RetTim	Width	Area	Height	Area%	MS (+)
1.82	0.03	914979.94	417755.63	100.00	449

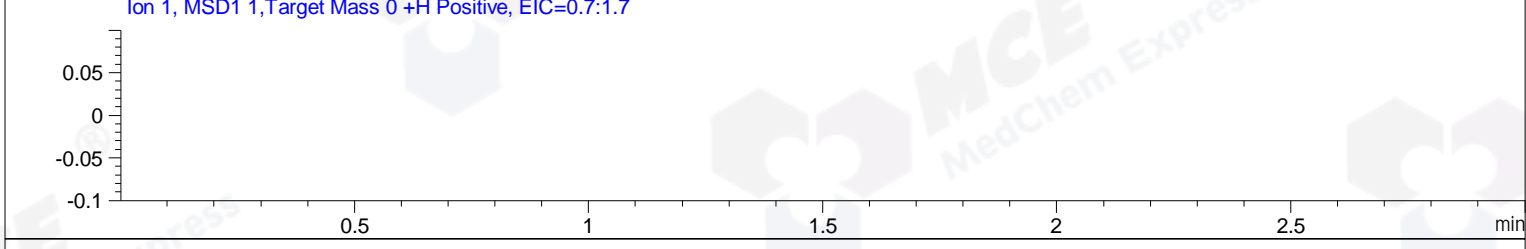
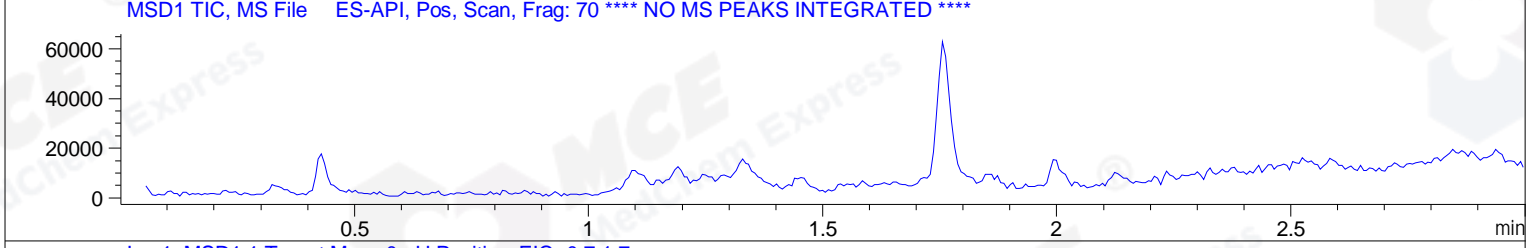
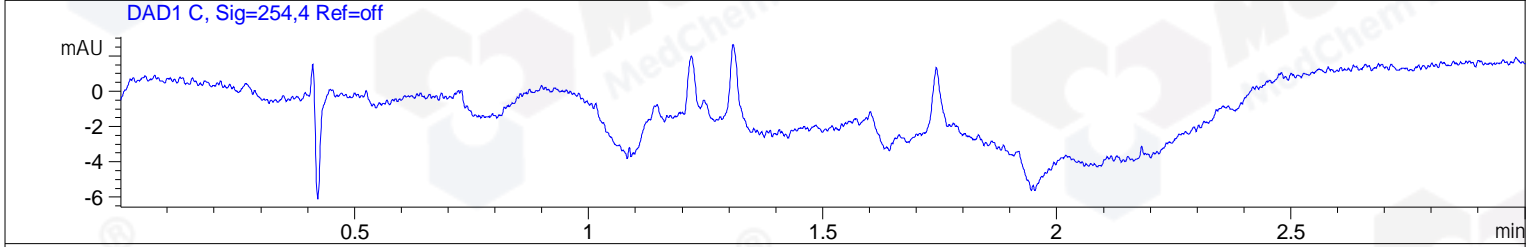
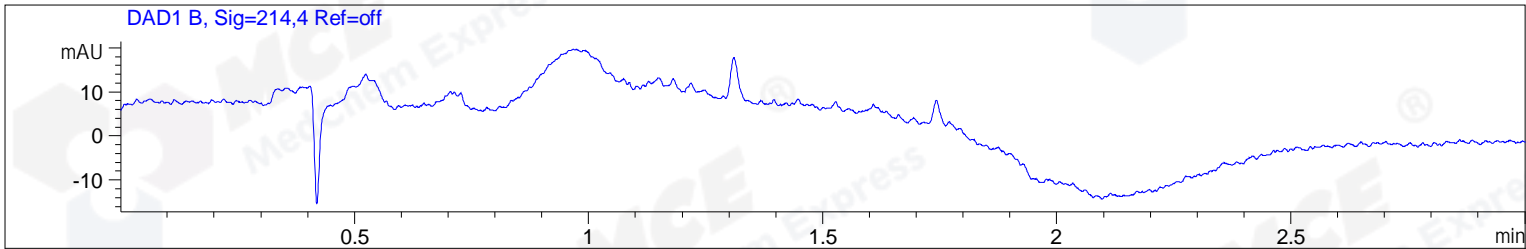
Ret. Time: 1.82

<<<< POSITIVE SPECTRA >>>>

ES-API Positive



File ..CHEM32\1\DATA\2020\20200324\891\BLANK--50.D Tgt Mass (CHM):
 Injection Date : 24 Mar 20 8:28 pm +0800 Seq. Line : 28
 Sample Name : BLANK Location : P1-F-07
 Acq. Operator : ZJ_1432 Inj : 50
 Spec. Reported : MS Integration Inj Volume : 1 ul
 Acq. Method : D:\Chem32\1\data\2020\20200324\891\1-POS-3MIN.M
 Analysis Method : D:\CHEM32\1\DATA\2020\20200324\891\1-POS-3MIN.M
 Catalog No : HY-15291 Batch#06388
 Method Info : Mobile Phase: A: water(0.01%TFA) B:ACN(0.01%TFA)
 Gradient: 5% to 95%B within 1.3 min
 Flow Rate :1.8ml/min
 Column :SunFire C18, 4.6*50mm,3.5um A-RP-433
 Oven Temperature : 45



Integration Results for DAD1 B, Sig=214,4 Ref=off

RetTim	Width	Area	Height	Area%	MS (+)
--------	-------	------	--------	-------	--------

Integration Results for DAD1 C, Sig=254,4 Ref=off

RetTim	Width	Area	Height	Area%	MS (+)
--------	-------	------	--------	-------	--------

Integration Results for MSD1 TIC, MS File

RetTim	Width	Area	Height	Area%	MS (+)
--------	-------	------	--------	-------	--------