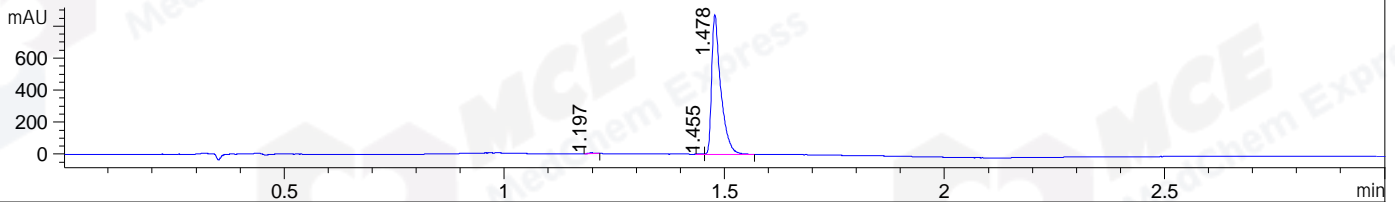
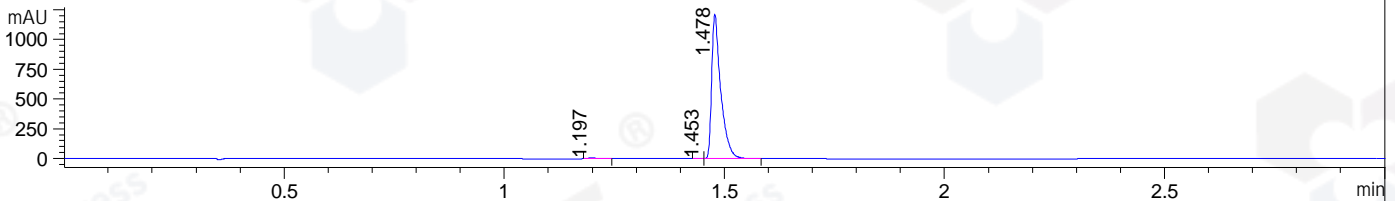


File ..DATA\2019\20191008\720\CPK2019-930-11456-.D Tgt Mass (CHM):
 Injection Date : 8 Oct 19 1:41 pm +0800 Seq. Line : 39
 Sample Name : CPK2019-930-11456 Location : P1-A-05
 Acq. Operator : ZJ_1432 Inj : 1
 Spec. Reported : MS Integration Inj Volume : 3 ul
 Acq. Method : D:\Chem32\1\data\2019\20191008\720\1-POS-3MIN.M
 Analysis Method : D:\CHEM32\1\DATA\2019\20191008\720\1-POS-3MIN.M
 Catalog No : HY-15294 Batch# 11456
 Method Info : Mobile Phase: A: water(0.01%TFA) B:ACN(0.01%TFA)
 Gradient: 5% to 95%B within 1.3 min
 Flow Rate :1.8ml/min
 Column :SunFire C18, 4.6*50mm,3.5um A-RP-433
 Oven Temperature : 45□

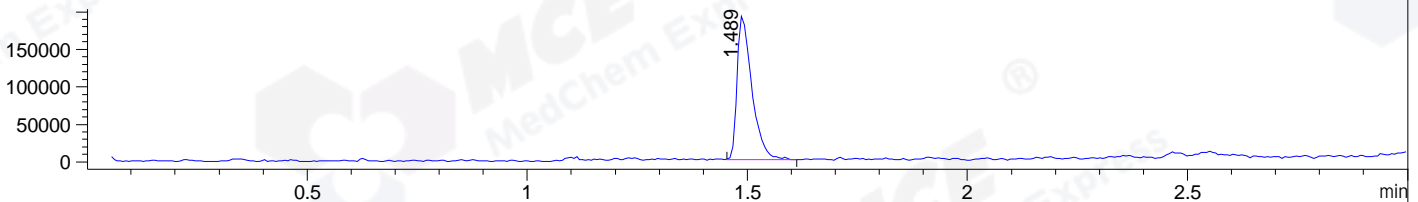
DAD1 B, Sig=214,4 Ref=off



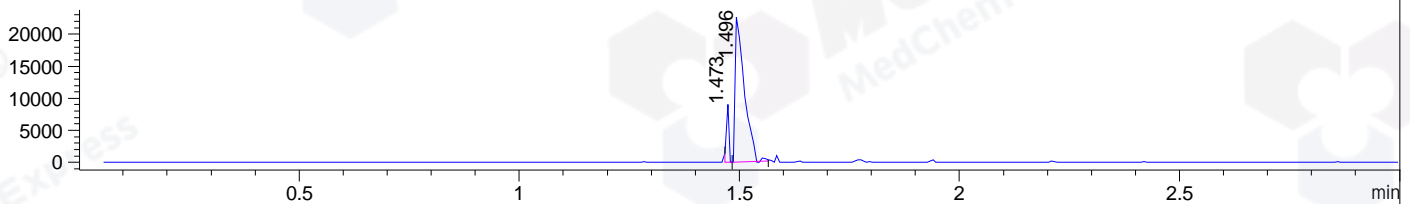
DAD1 C, Sig=254,4 Ref=off



MSD1 TIC, MS File ES-API, Pos, Scan, Frag: 70



Ion 365.4041, MSD1 365.4041, Target Mass 364.4041 +H Positive, EIC=365.10:366.10



Integration Results for DAD1 B, Sig=214,4 Ref=off

RetTim	Width	Area	Height	Area%	MS (+)
1.20	0.02	5.34	5.01	0.43	ND
1.46	0.01	1.47	2.29	0.12	ND
1.48	0.02	1244.43	874.78	99.46	365

Integration Results for DAD1 C, Sig=254,4 Ref=off

RetTim	Width	Area	Height	Area%	MS (+)
1.20	0.03	10.37	6.77	0.59	ND
1.45	0.01	1.73	3.11	0.10	ND
1.48	0.02	1736.07	1215.84	99.31	365

Integration Results for MSD1 TIC, MS File

RetTim	Width	Area	Height	Area%	MS (+)
1.49	0.03	444842.50	193118.58	100.00	365

Ret. Time: 1.49

<<<< POSITIVE SPECTRA >>>>

ES-API Positive

