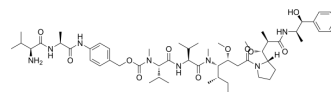


## Val-Ala-PAB-MMAE

<b>Cat. No.:</b>	HY-153032
<b>CAS No.:</b>	1912408-92-4
<b>Molecular Formula:</b>	C <sub>55</sub> H <sub>88</sub> N <sub>8</sub> O <sub>11</sub>
<b>Molecular Weight:</b>	1037.33
<b>Target:</b>	Drug-Linker Conjugates for ADC
<b>Pathway:</b>	Antibody-drug Conjugate/ADC Related
<b>Storage:</b>	4°C, protect from light * In solvent : -80°C, 6 months; -20°C, 1 month (protect from light)



### SOLVENT & SOLUBILITY

<b>In Vitro</b>	DMSO : 100 mg/mL (96.40 mM; Need ultrasonic)				
		Solvent Concentration	Mass		
	<b>Preparing Stock Solutions</b>		1 mg	5 mg	10 mg
		1 mM	0.9640 mL	4.8201 mL	9.6401 mL
		5 mM	0.1928 mL	0.9640 mL	1.9280 mL
10 mM	0.0964 mL	0.4820 mL	0.9640 mL		
Please refer to the solubility information to select the appropriate solvent.					
<b>In Vivo</b>	1. Add each solvent one by one: 10% DMSO >> 40% PEG300 >> 5% Tween-80 >> 45% saline Solubility: ≥ 2.5 mg/mL (2.41 mM); Clear solution  2. Add each solvent one by one: 10% DMSO >> 90% corn oil Solubility: ≥ 2.5 mg/mL (2.41 mM); Clear solution				

### BIOLOGICAL ACTIVITY

<b>Description</b>	Val-Ala-PAB-MMAE is a Drug-Linker Conjugate for ADC, consisting of ADC linker (Val-Ala-PAB) and MMAE. MMAE is an effective inhibitor of tubulin.
--------------------	--

**Caution: Product has not been fully validated for medical applications. For research use only.**

Tel: 609-228-6898

Fax: 609-228-5909

E-mail: tech@MedChemExpress.com

Address: 1 Deer Park Dr, Suite Q, Monmouth Junction, NJ 08852, USA