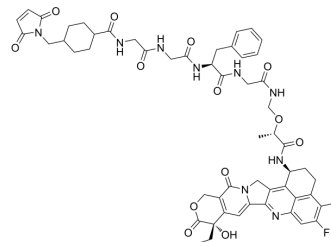


Mal-cyclohexane-Gly-Gly-Phe-Gly-Exatecan

Cat. No.:	HY-153067
CAS No.:	2578019-72-2
Molecular Formula:	C ₅₅ H ₆₀ FN ₉ O ₁₃
Molecular Weight:	1074.12
Target:	Drug-Linker Conjugates for ADC; Topoisomerase
Pathway:	Antibody-drug Conjugate/ADC Related; Cell Cycle/DNA Damage
Storage:	Please store the product under the recommended conditions in the Certificate of Analysis.



BIOLOGICAL ACTIVITY

Description	Mal-cyclohexane-Gly-Gly-Phe-Gly-Exatecan is a coupling compound that can be used for the synthesis of ADC. Mal-cyclohexane-Gly-Gly-Phe-Gly-Exatecan synthesized ADC shows good antitumor activity in vitro and in vivo ^[1] .
IC ₅₀ & Target	Camptothecins

REFERENCES

[1]. Yi Zhu, et al. Camptothecin drug and antibody conjugate thereof. Patent WO2022056696A1.

Caution: Product has not been fully validated for medical applications. For research use only.

Tel: 609-228-6898

Fax: 609-228-5909

E-mail: tech@MedChemExpress.com

Address: 1 Deer Park Dr, Suite Q, Monmouth Junction, NJ 08852, USA