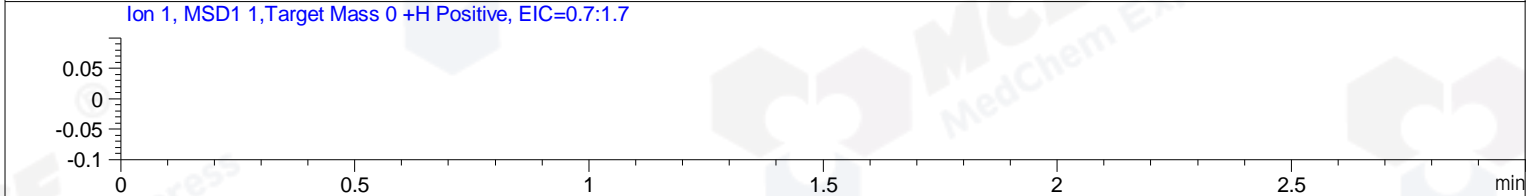
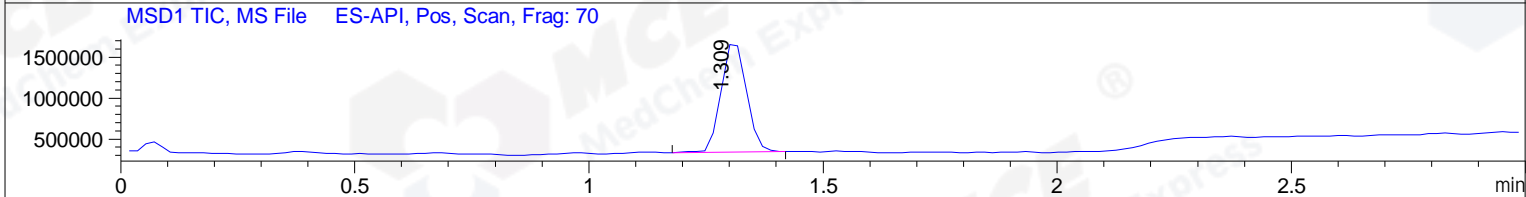
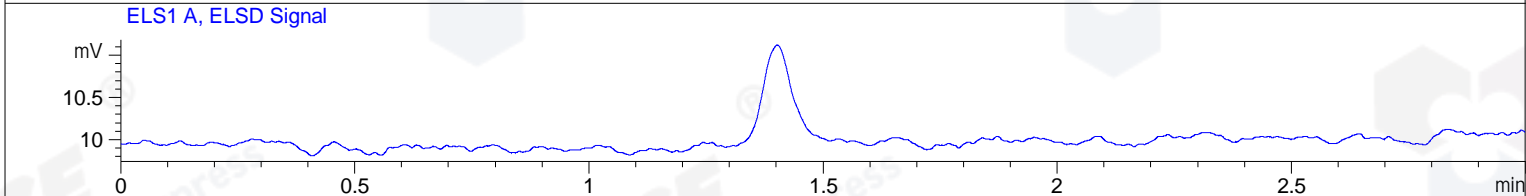
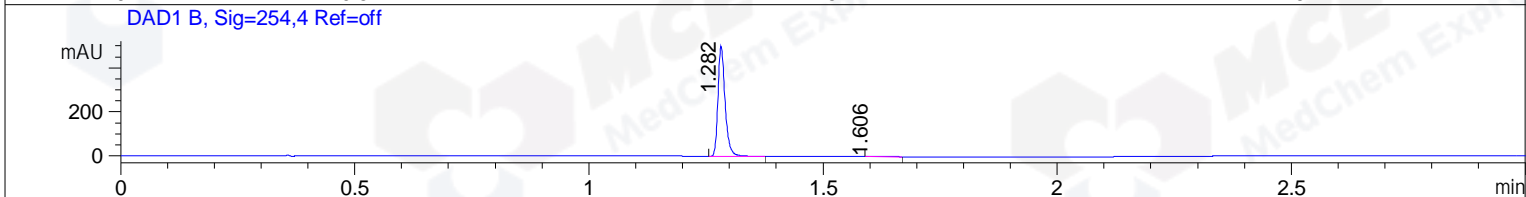
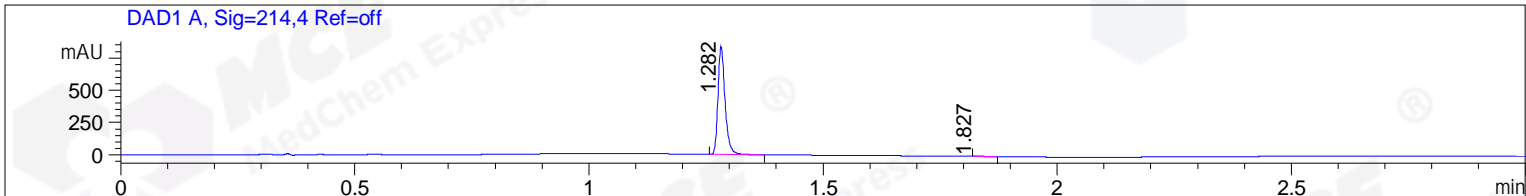


File ..\Data\20190527\20190527\CPK2019-527-23191.D Tgt Mass (CHM):
 Injection Date : 27 May 19 4:57 pm +0800 Seq. Line : 81
 Sample Name : CPK2019-527-23191 Location : P1-F-10
 Acq. Operator : SYSTEM Inj : 1
 Spec. Reported : MS Integration Inj Volume : 1 ul
 Acq. Method : D:\LCMS03\Data\20190527\20190527\1-POS-3MIN.M
 Analysis Method : D:\LCMS03\Data\20190527\20190527\1-POS-3MIN.M
 Catalog No : HY-15315 Batch#23191
 Method Info : Mobile Phase: A: water(0.01%TFA) B:ACN(0.01%TFA)
 Gradient: 5% to 95%B within 1.3 min
 Flow Rate :1.8ml/min
 Column :SunFire C18, 4.6*50mm,3.5um A-RP-392
 Oven Temperature : 45C



Integration Results for DAD1 A, Sig=214,4 Ref=off

RetTim	Width	Area	Height	Area%	MS (+)
1.28	0.02	874.89	831.87	99.93	372
1.83	0.02	0.59	0.35	0.07	114

Integration Results for DAD1 B, Sig=254,4 Ref=off

RetTim	Width	Area	Height	Area%	MS (+)
1.28	0.02	526.17	498.22	99.89	372
1.61	0.03	0.59	0.31	0.11	114

Integration Results for ELS1 A, ELSD Signal

RetTim	Width	Area	Height	Area%	MS (+)
--------	-------	------	--------	-------	--------

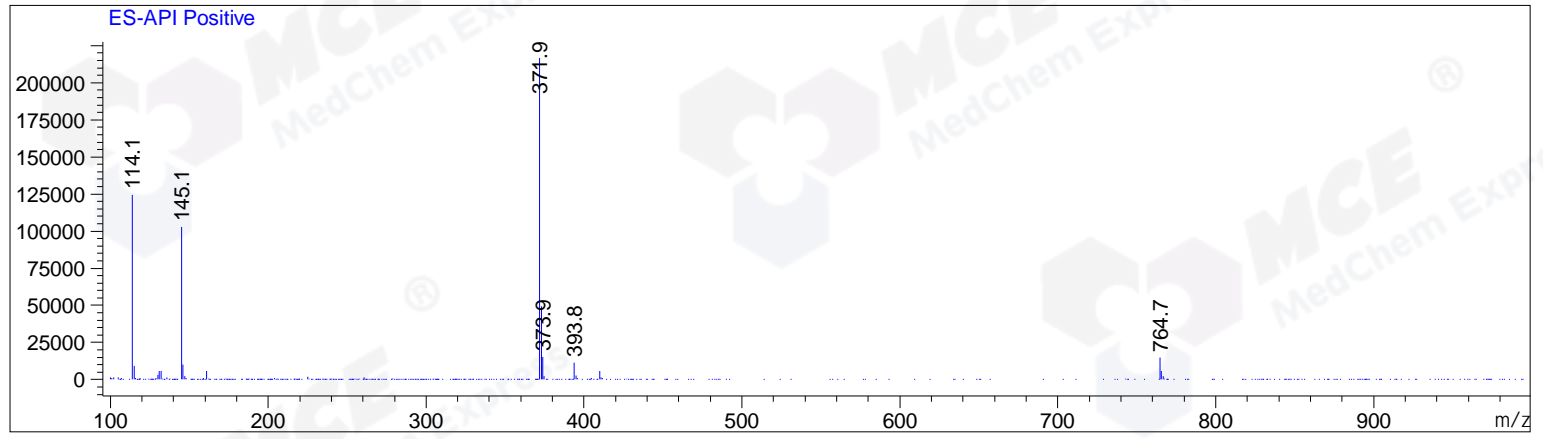
Integration Results for MSD1 TIC, MS File

RetTim	Width	Area	Height	Area%	MS (+)
--------	-------	------	--------	-------	--------



Ret. Time: 1.31

<<<< POSITIVE SPECTRA >>>>



*** End of Report ***