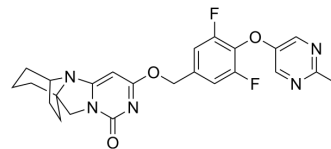


Lp-PLA2-IN-12

Cat. No.:	HY-153183
CAS No.:	2637485-14-2
Molecular Formula:	C ₂₄ H ₂₃ F ₂ N ₅ O ₃
Molecular Weight:	467.47
Target:	Phospholipase
Pathway:	Metabolic Enzyme/Protease
Storage:	Please store the product under the recommended conditions in the Certificate of Analysis.



BIOLOGICAL ACTIVITY

Description

Lp-PLA2-IN-12 (compound 19) is an Lp-PLA2 inhibitor. Lp-PLA2-IN-12 can be used for the study of neurodegenerative related diseases such as Alzheimer's disease (AD), glaucoma, age-related macular degeneration (AMD), or cardiovascular disease including atherosclerosis^[1].

REFERENCES

[1]. Xiao Qiong, et al. Tetracyclic pyrimidinone compounds, preparation method, composition and application thereof. Patent, CN112574221A.

Caution: Product has not been fully validated for medical applications. For research use only.

Tel: 609-228-6898

Fax: 609-228-5909

E-mail: tech@MedChemExpress.com

Address: 1 Deer Park Dr, Suite Q, Monmouth Junction, NJ 08852, USA