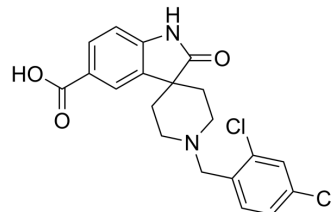


LI-2242

Cat. No.:	HY-153530
CAS No.:	2762762-17-2
Molecular Formula:	C ₂₀ H ₁₈ Cl ₂ N ₂ O ₃
Molecular Weight:	405.27
Target:	Others
Pathway:	Others
Storage:	Please store the product under the recommended conditions in the Certificate of Analysis.



BIOLOGICAL ACTIVITY

Description	LI-2242 is an inositol hexakisphosphate kinase (IP6K) inhibitor. LI-2242 has inhibition effect for IP6K1, IP6K2, IP6K3 and IPMK with IC ₅₀ values of 31 nM, 42 nM, 8.7 nM and 1944 nM, respectively. LI-2242 can be used for the research of type II diabetes, obesity, metabolic complications, venous thrombosis, and psychiatric disorders ^[1] .
IC ₅₀ & Target	IC ₅₀ : 31 nM (IP6K1); 42 nM (IP6K2); 8.7 nM (IP6K3); 1944 nM (IPMK) ^[1] .
In Vitro	LI-2242 has inhibition effect for IP6K1, IP6K2, IP6K3 and IPMK with IC ₅₀ values of 31 nM, 42 nM, 8.7 nM and 1944 nM, respectively ^[1] . MCE has not independently confirmed the accuracy of these methods. They are for reference only.

REFERENCES

[1]. Liao G, et al. Identification of Small-Molecule Inhibitors of Human Inositol Hexakisphosphate Kinases by High-Throughput Screening. ACS Pharmacol Transl Sci. 2021;4(2):780-789. Published 2021 Mar 3.

Caution: Product has not been fully validated for medical applications. For research use only.

Tel: 609-228-6898

Fax: 609-228-5909

E-mail: tech@MedChemExpress.com

Address: 1 Deer Park Dr, Suite Q, Monmouth Junction, NJ 08852, USA