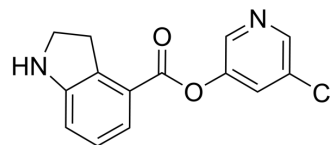


## GRL-1720

Cat. No.:	HY-153533
CAS No.:	2835511-03-8
Molecular Formula:	C <sub>14</sub> H <sub>11</sub> ClN <sub>2</sub> O <sub>2</sub>
Molecular Weight:	274.7
Target:	SARS-CoV
Pathway:	Anti-infection
Storage:	Please store the product under the recommended conditions in the Certificate of Analysis.



### SOLVENT & SOLUBILITY

In Vitro	DMSO : 100 mg/mL (364.03 mM; Need ultrasonic)				
		Solvent Concentration	Mass 1 mg	5 mg	10 mg
	Preparing Stock Solutions	1 mM	3.6403 mL	18.2017 mL	36.4033 mL
		5 mM	0.7281 mL	3.6403 mL	7.2807 mL
		10 mM	0.3640 mL	1.8202 mL	3.6403 mL
Please refer to the solubility information to select the appropriate solvent.					
In Vivo	1. Add each solvent one by one: 10% DMSO >> 40% PEG300 >> 5% Tween-80 >> 45% saline Solubility: 2.5 mg/mL (9.10 mM); Clear solution; Need ultrasonic				
	2. Add each solvent one by one: 10% DMSO >> 90% (20% SBE-β-CD in saline) Solubility: 2.5 mg/mL (9.10 mM); Clear solution; Need ultrasonic				
	3. Add each solvent one by one: 10% DMSO >> 90% corn oil Solubility: 2.5 mg/mL (9.10 mM); Clear solution; Need ultrasonic				

### BIOLOGICAL ACTIVITY

Description	GRL-1720 is a potent SARS-CoV-2 Mpro inhibitor with an EC <sub>50</sub> value of 15 μM. GRL-1720 shows anti-SARS-CoV2 activity <sup>[1]</sup> .
IC <sub>50</sub> & Target	EC <sub>50</sub> : 15 μM (SARS-CoV-2 Mpro) <sup>[1]</sup>
In Vitro	GRL-1720 (1, 10, 100 μM; 3 days) shows protected activity against VeroE6 cells cultured with 100 μM SARS-CoV-2WK-521 <sup>[1]</sup> . MCE has not independently confirmed the accuracy of these methods. They are for reference only.

### REFERENCES

---

[1]. Hattori SI, et al. A small molecule compound with an indole moiety inhibits the main protease of SARS-CoV-2 and blocks virus replication. Nat Commun. 2021 Jan 28;12(1):668.

---

**Caution: Product has not been fully validated for medical applications. For research use only.**

Tel: 609-228-6898

Fax: 609-228-5909

E-mail: [tech@MedChemExpress.com](mailto:tech@MedChemExpress.com)

Address: 1 Deer Park Dr, Suite Q, Monmouth Junction, NJ 08852, USA