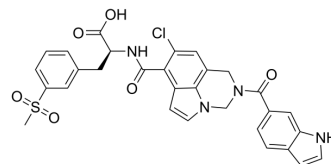


## Immune cell migration-IN-1

Cat. No.:	HY-153565
CAS No.:	2316683-71-1
Molecular Formula:	C <sub>30</sub> H <sub>25</sub> ClN <sub>4</sub> O <sub>6</sub> S
Molecular Weight:	605.06
Target:	Others
Pathway:	Others
Storage:	Please store the product under the recommended conditions in the Certificate of Analysis.



### BIOLOGICAL ACTIVITY

#### Description

Immune cell migration-IN-1 (compound 2) is a potent agent to inhibit immune cell migration. Immune cell migration-IN-1 can be used for research in alleviating dry eye diseases, eczema dermatitis and psoriasis<sup>[1]</sup>.

### REFERENCES

[1]. Shen W, et al. Immune cell migration inhibitor. China, CN109721605 A. 2019-05-07.

**Caution: Product has not been fully validated for medical applications. For research use only.**

Tel: 609-228-6898

Fax: 609-228-5909

E-mail: tech@MedChemExpress.com

Address: 1 Deer Park Dr, Suite Q, Monmouth Junction, NJ 08852, USA