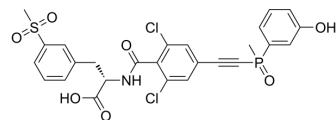


Immune cell migration-IN-2

Cat. No.:	HY-153567
CAS No.:	2260679-24-9
Molecular Formula:	C ₂₆ H ₂₂ Cl ₂ NO ₇ PS
Molecular Weight:	594.4
Target:	Others
Pathway:	Others
Storage:	Please store the product under the recommended conditions in the Certificate of Analysis.



BIOLOGICAL ACTIVITY

Description

Immune cell migration-IN-2 is a potent immune cell migration inhibitor with an EC₅₀ of 13.5 nM in a T-cell adhesion assay. Immune cell migration-IN-2 is extracted from patent WO2019001171, example 11, can be used for dry-eye and other retinal diseases research^[1]. Immune cell migration-IN-2 is a click chemistry reagent, it contains an Alkyne group and can undergo copper-catalyzed azide-alkyne cycloaddition (CuAAC) with molecules containing Azide groups.

REFERENCES

[1]. Shen wang et al. Phosphorus-containing compound and preparation and use thereof. Patent WO2019001171A1.

Caution: Product has not been fully validated for medical applications. For research use only.

Tel: 609-228-6898

Fax: 609-228-5909

E-mail: tech@MedChemExpress.com

Address: 1 Deer Park Dr, Suite Q, Monmouth Junction, NJ 08852, USA