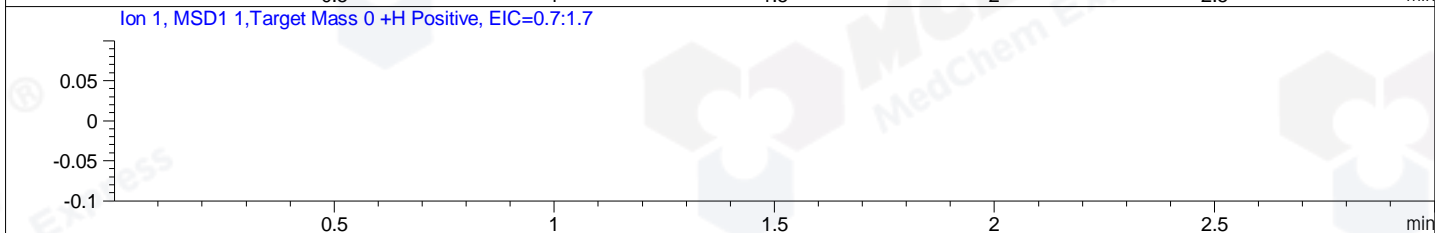
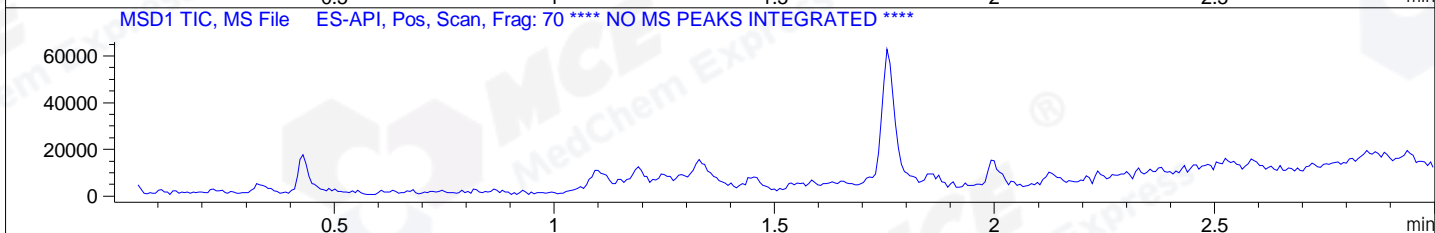
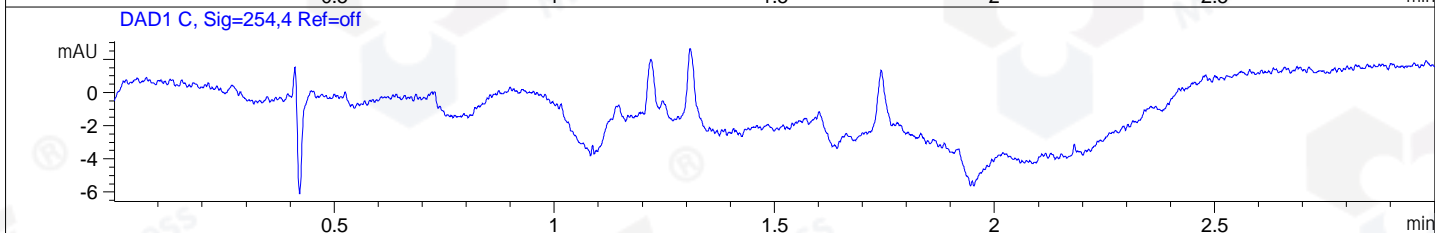
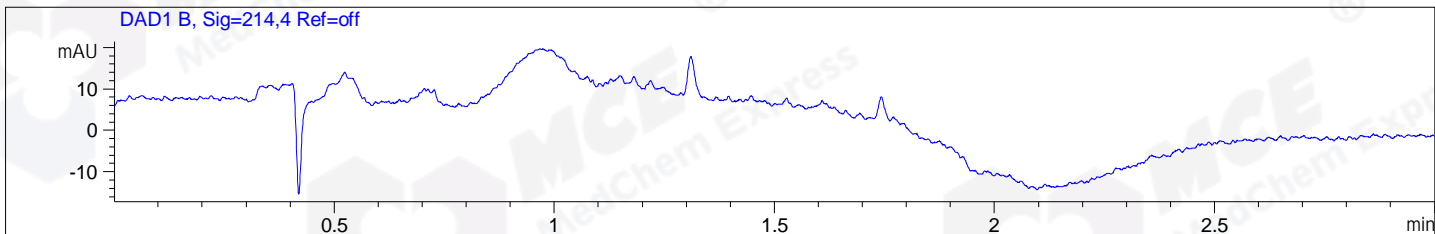


File ..CHEM32\1\DATA\2020\20200324\891\BLANK--50.D Tgt Mass (CHM):
 Injection Date : 24 Mar 20 8:28 pm +0800 Seq. Line : 28
 Sample Name : BLANK Location : P1-F-07
 Acq. Operator : ZJ_1432 Inj : 50
 Spec. Reported : MS Integration Inj Volume : 1 ul
 Acq. Method : D:\Chem32\1\data\2020\20200324\891\1-POS-3MIN.M
 Analysis Method : D:\CHEM32\1\DATA\2020\20200324\891\1-POS-3MIN.M
 Catalog No : HY-15358 Batch# 06430
 Method Info : Mobile Phase: A: water(0.01%TFA) B:ACN(0.01%TFA)
 Gradient: 5% to 95%B within 1.3 min
 Flow Rate :1.8ml/min
 Column :SunFire C18, 4.6*50mm,3.5um A-RP-433
 Oven Temperature : 45□



Integration Results for DAD1 B, Sig=214,4 Ref=off

RetTim	Width	Area	Height	Area%	MS (+)
-----	-----	-----	-----	-----	-----

Integration Results for DAD1 C, Sig=254,4 Ref=off

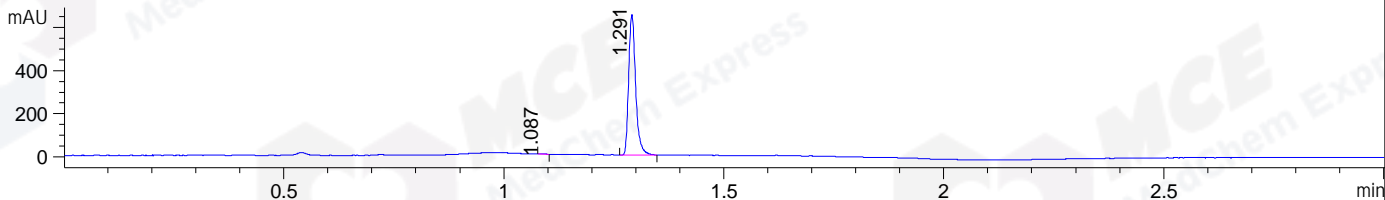
RetTim	Width	Area	Height	Area%	MS (+)
-----	-----	-----	-----	-----	-----

Integration Results for MSD1 TIC, MS File

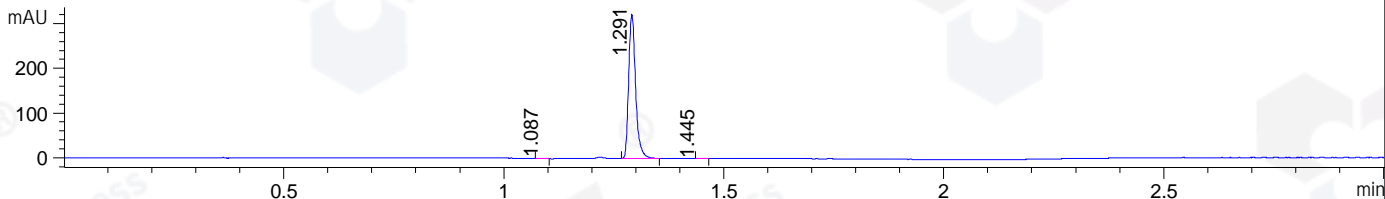
RetTim	Width	Area	Height	Area%	MS (+)
-----	-----	-----	-----	-----	-----

File ..\DATA\2020\20200324\891\CPK2020-323-06430.D Tgt Mass (CHM):
Injection Date : 24 Mar 20 9:37 pm +0800 Seq. Line : 43
Sample Name : CPK2020-323-06430 Location : P1-D-06
Acq. Operator : ZJ_1432 Inj : 1
Spec. Reported : MS Integration Inj Volume : 0.4 ul
Acq. Method : D:\Chem32\1\data\2020\20200324\891\1-POS-3MIN.M
Analysis Method : D:\CHEM32\1\DATA\2020\20200324\891\1-POS-3MIN.M
Catalog No : HY-15358 Batch# 06430
Method Info : Mobile Phase: A: water(0.01%TFA) B:ACN(0.01%TFA)
Gradient: 5% to 95%B within 1.3 min
Flow Rate :1.8ml/min
Column :SunFire C18, 4.6*50mm,3.5um A-RP-433
Oven Temperature : 45□

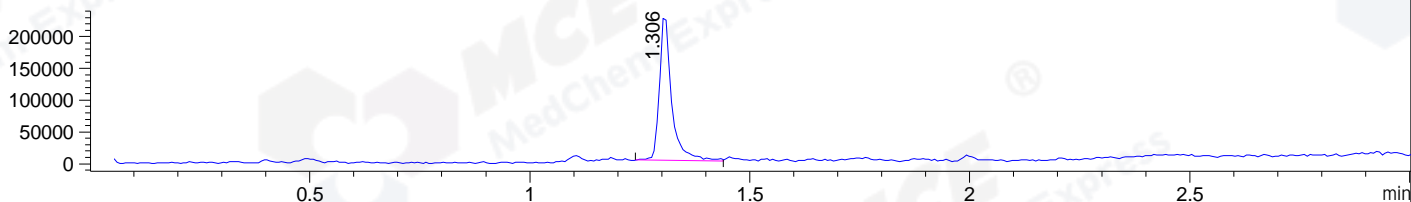
DAD1 B, Sig=214,4 Ref=off



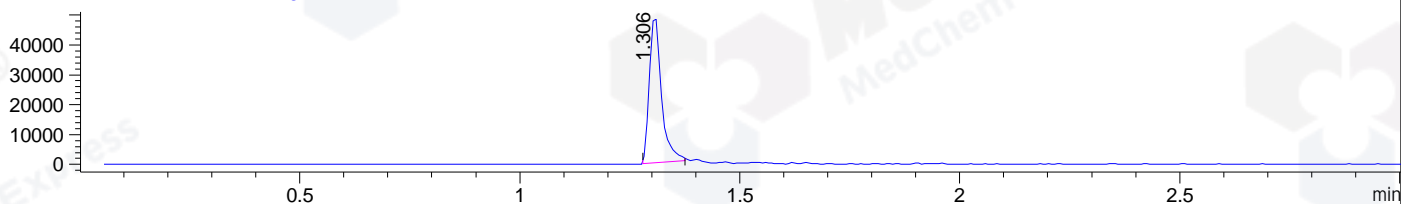
DAD1 C, Sig=254,4 Ref=off



MSD1 TIC, MS File ES-API, Pos, Scan, Frag: 70



Ion 518, MSD1 518, Target Mass 517 +H Positive, EIC=517.7:518.7



Integration Results for DAD1 B, Sig=214,4 Ref=off

RetTim	Width	Area	Height	Area%	MS (+)
1.09	0.01	1.66	1.87	0.23	264
1.29	0.02	718.33	652.45	99.77	260

Integration Results for DAD1 C, Sig=254,4 Ref=off

RetTim	Width	Area	Height	Area%	MS (+)
1.09	0.01	0.58	0.65	0.16	264
1.29	0.02	354.51	322.90	99.72	260
1.44	0.01	0.41	0.50	0.11	ND

Integration Results for MSD1 TIC, MS File

RetTim	Width	Area	Height	Area%	MS (+)
1.31	0.04	440967.97	233798.84	100.00	260

Ret. Time: 1.31

<<<< POSITIVE SPECTRA >>>>

ES-API Positive

