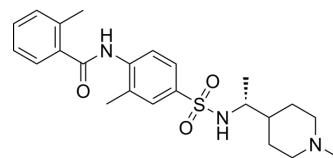


IPG7236

Cat. No.:	HY-153670		
CAS No.:	2756350-91-9		
Molecular Formula:	C ₂₃ H ₃₁ N ₃ O ₃ S		
Molecular Weight:	429.58		
Target:	CCR		
Pathway:	GPCR/G Protein; Immunology/Inflammation		
Storage:	Powder	-20°C	3 years
		4°C	2 years
	In solvent	-80°C	6 months
		-20°C	1 month



SOLVENT & SOLUBILITY

In Vitro	DMSO : 100 mg/mL (232.79 mM; Need ultrasonic)				
		Solvent Concentration	Mass 1 mg	5 mg	10 mg
	Preparing Stock Solutions	1 mM	2.3279 mL	11.6393 mL	23.2786 mL
		5 mM	0.4656 mL	2.3279 mL	4.6557 mL
		10 mM	0.2328 mL	1.1639 mL	2.3279 mL
Please refer to the solubility information to select the appropriate solvent.					
In Vivo	1. Add each solvent one by one: 10% DMSO >> 40% PEG300 >> 5% Tween-80 >> 45% saline Solubility: 2.5 mg/mL (5.82 mM); Clear solution; Need ultrasonic				
	2. Add each solvent one by one: 10% DMSO >> 90% (20% SBE-β-CD in saline) Solubility: 2.5 mg/mL (5.82 mM); Clear solution; Need ultrasonic				
	3. Add each solvent one by one: 10% DMSO >> 90% corn oil Solubility: 2.5 mg/mL (5.82 mM); Clear solution; Need ultrasonic				

BIOLOGICAL ACTIVITY

Description	IPG7236 is a selective CCR8 antagonist. IPG7236 exhibits significant tumor suppression in a mouse xenograft model of human breast cancer. IPG7236 can be used in cancer research ^[1] .
IC ₅₀ & Target	CCR8 ^[1] .

REFERENCES

Caution: Product has not been fully validated for medical applications. For research use only.

Tel: 609-228-6898

Fax: 609-228-5909

E-mail: tech@MedChemExpress.com

Address: 1 Deer Park Dr, Suite Q, Monmouth Junction, NJ 08852, USA