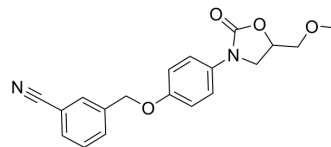


Cimoxatone

Cat. No.:	HY-15386
CAS No.:	73815-11-9
Molecular Formula:	C ₁₉ H ₁₈ N ₂ O ₄
Molecular Weight:	338.36
Target:	Monoamine Oxidase
Pathway:	Neuronal Signaling
Storage:	Please store the product under the recommended conditions in the Certificate of Analysis.



BIOLOGICAL ACTIVITY

Description	Cimoxatone (MD 780515) is a reversible, selectively and orally active type A monoamine oxidase (MAO-A) inhibitor. Cimoxatone enhances the anorectic action of Serotonin (HY-B1473A) ^[1] .	
IC₅₀ & Target	MAO-A	
In Vivo	Cimoxatone (20 mg/kg; p.o.) enhances the anorectic action of 5-HT (1 mg/kg; s.c.) in rats ^[1] . MCE has not independently confirmed the accuracy of these methods. They are for reference only.	
	Animal Model:	250-300 g, Adult male Wistar rats ^[1]
	Dosage:	20 mg/kg
	Administration:	P.o.
	Result:	Significantly reduced sucrose intake induced by 1 mg/kg 5-HT or its vehicle injected 2 and 24 h later, significantly enhanced the anorectic action of 5-HT at 2 h but not at 24 h.

Caution: Product has not been fully validated for medical applications. For research use only.

Tel: 609-228-6898

Fax: 609-228-5909

E-mail: tech@MedChemExpress.com

Address: 1 Deer Park Dr, Suite Q, Monmouth Junction, NJ 08852, USA