

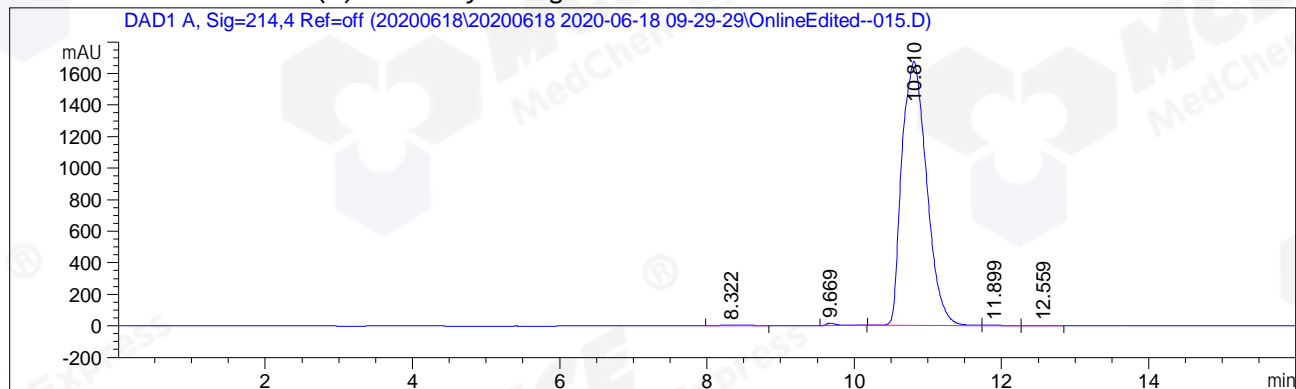
Sample Name: CPK2020-617-15592

```

=====
Acq. Operator   : zqq_793                      Seq. Line :   15
Acq. Instrument : HPLC-12                      Location  :   15
Injection Date  : 6/18/2020 14:08:06          Inj       :    1
                                           Inj Volume: 5.000 µl
Different Inj Volume from Sample Entry! Actual Inj Volume : 10.000 µl
Acq. Method     : D:\Chem32\1\Data\20200618\20200618 2020-06-18 09-29-29\10-90 214NM.M
Last changed    : 6/18/2020 11:36:43 by zqq_793
Analysis Method : D:\Chem32\1\Data\20200618\20200618 2020-06-18 09-29-29\10-90 214NM.M (
Sequence Method)
Last changed    : 6/18/2020 14:47:46 by zqq_793
                 (modified after loading)
Catalog No     : HY-15407
=====

```

Additional Info : Peak(s) manually integrated



```

=====
                          Area Percent Report
=====

```

```

Sorted By      :      Signal
Multiplier     :      1.0000
Dilution      :      1.0000
Do not use Multiplier & Dilution Factor with ISTDs

```

Signal 1: DAD1 A, Sig=214,4 Ref=off

Peak #	RetTime [min]	Type	Width [min]	Area [mAU*s]	Height [mAU]	Area %
1	8.322	BB	0.3009	32.27024	1.46559	0.0821
2	9.669	BB	0.1418	131.73517	13.74475	0.3353
3	10.810	MF R	0.3886	3.90606e4	1675.21155	99.4149
4	11.899	MF R	0.3138	48.73876	2.58860	0.1240
5	12.559	FM R	0.4209	17.12643	6.78174e-1	0.0436

```
Totals :                      3.92905e4  1693.68865
```

```

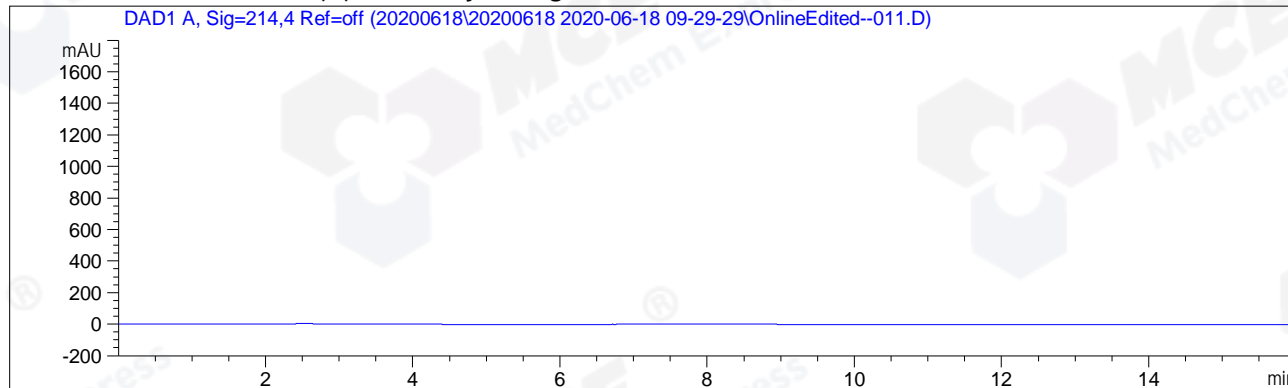
=====
*** End of Report ***

```

Sample Name: BLANK

```
=====
Acq. Operator   : zqq_793                      Seq. Line :   11
Acq. Instrument : HPLC-12                      Location  :    1
Injection Date  : 6/18/2020 12:51:51           Inj       :    2
                                           Inj Volume: 5.000 µl
Acq. Method     : D:\Chem32\1\Data\20200618\20200618 2020-06-18 09-29-29\10-90 214NM.M
Last changed    : 6/18/2020 11:36:43 by zqq_793
Analysis Method : D:\Chem32\1\Data\20200618\20200618 2020-06-18 09-29-29\10-90 214NM.M (
                  Sequence Method)
Last changed    : 6/18/2020 14:48:42 by zqq_793
                  (modified after loading)
Catalog No      : HY-15407   A-RP-128
=====
```

Additional Info : Peak(s) manually integrated



```
=====
                          Area Percent Report
=====
```

```
Sorted By      :      Signal
Multiplier     :      1.0000
Dilution      :      1.0000
Do not use Multiplier & Dilution Factor with ISTDs
```

No peaks found

```
=====
*** End of Report ***
=====
```