

File ..HEM32\1\DATA\20170401\BIZ\BIZ2017-401-WJ5.D Tgt Mass (EZX): 406.10

Injection Date : 1 Apr 17 3:15 pm +0800 Seq. Line : 0

Sample Name : BIZ2017-401-WJ5 Location : PL-B-05

Acq. Operator : GZZ_718 Inj : 1

Spec. Reported : MS Integration Inj Volume : 1 ul

Acq. Method : D:\Chem32\1\METHODS\1-POS-3MIN.M

Analysis Method : D:\CHEM32\1\METHODS\1-POS-3MIN-PROSRSS.M

Catalog No : HY-15411 Batch#24133 Easy-Access Method: '1-POS-3MIN' 406.10

Method Info : Mobile Phase: A: water(0.01%TFA) B:ACN(0.01%TFA)

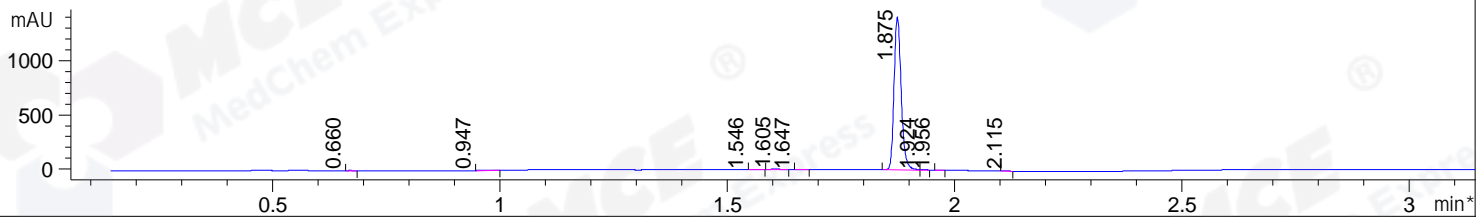
Gradient: 5% to 95%B within 1.3 min

Flow Rate :1.8ml/min

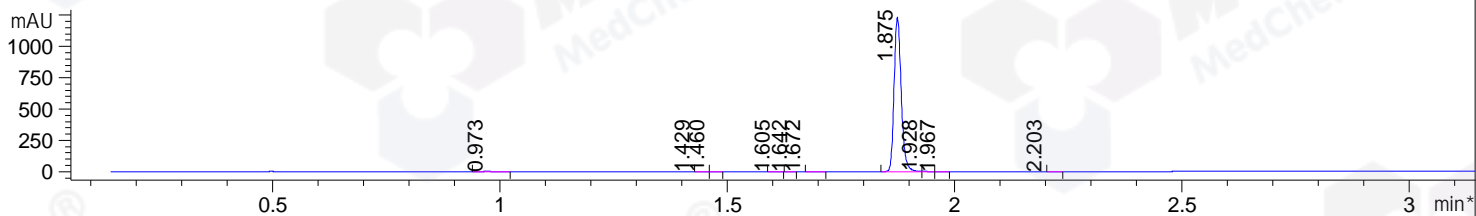
Column :SunFire C18, 4.6*50mm,3.5um A-RP-186

Oven Temperature : 45C

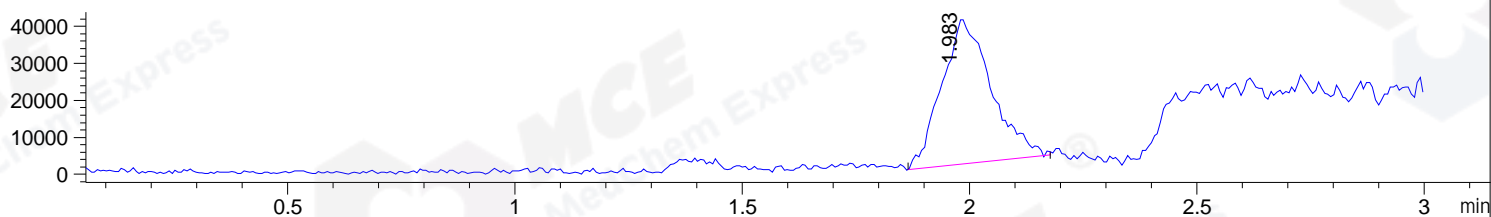
*DAD1 B, Sig=214,4 Ref=off



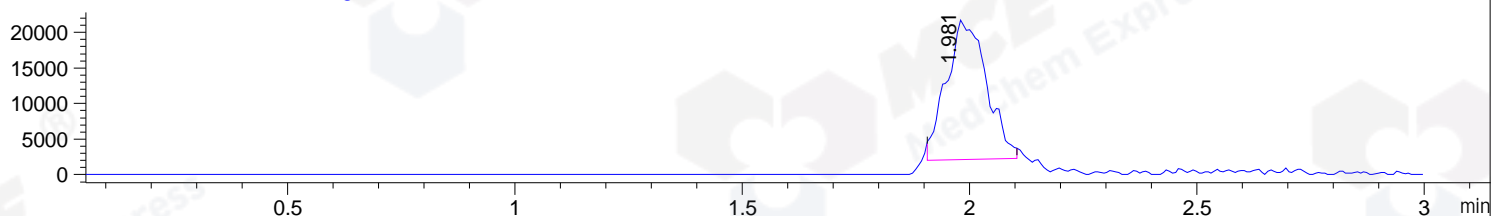
*DAD1 C, Sig=254,4 Ref=off



MSD1 TIC, MS File ES-API, Pos, Scan, Frag: 70



Ion 407.1, MSD1 407.1, Target Mass 406.1 +H Positive, EIC=406.8:407.8



Integration Results for DAD1 B, Sig=214,4 Ref=off

RetTim	Width	Area	Height	Area%	MS (+)
0.66	0.02	1.10	0.39	0.07	ND
0.95	0.03	7.32	0.19	0.47	ND
1.55	0.02	0.87	0.03	0.06	ND
1.61	0.02	9.64	8.82	0.62	ND
1.65	0.02	2.87	0.09	0.18	ND
1.87	0.02	1531.76	1414.24	98.28	407
1.92	0.01	2.75	3.41	0.18	407
1.96	0.01	0.82	0.06	0.05	407
2.12	0.02	1.42	1.40	0.09	204

Integration Results for DAD1 C, Sig=254,4 Ref=off

RetTim	Width	Area	Height	Area%	MS (+)
0.97	0.03	0.99	0.60	0.07	ND
1.43	0.02	0.66	0.01	0.05	145
1.46	0.02	0.41	0.24	0.03	ND
1.60	0.02	0.70	0.67	0.05	ND
1.64	0.01	0.38	0.47	0.03	ND

1.67	0.02	0.63	0.05	0.05	ND
1.87	0.02	1345.42	1241.40	99.29	407
1.93	0.01	3.10	3.57	0.23	407
1.97	0.02	1.48	1.29	0.11	407
2.20	0.02	1.32	-0.00	0.10	141

Ret. Time: 1.98

<<<< POSITIVE SPECTRA >>>>

