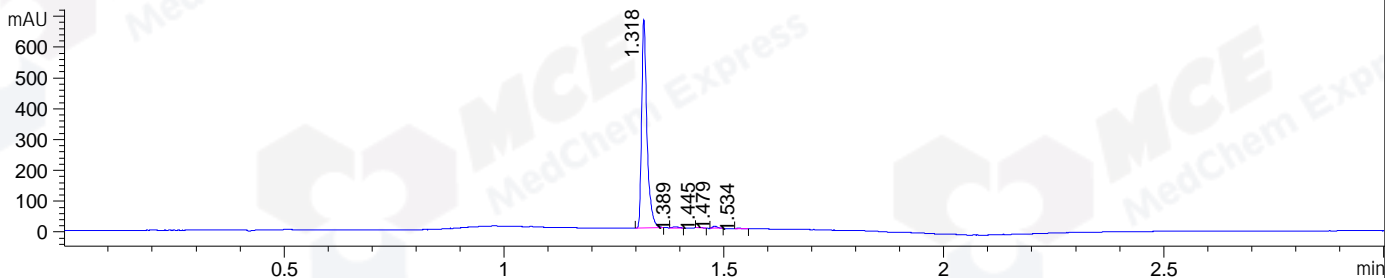
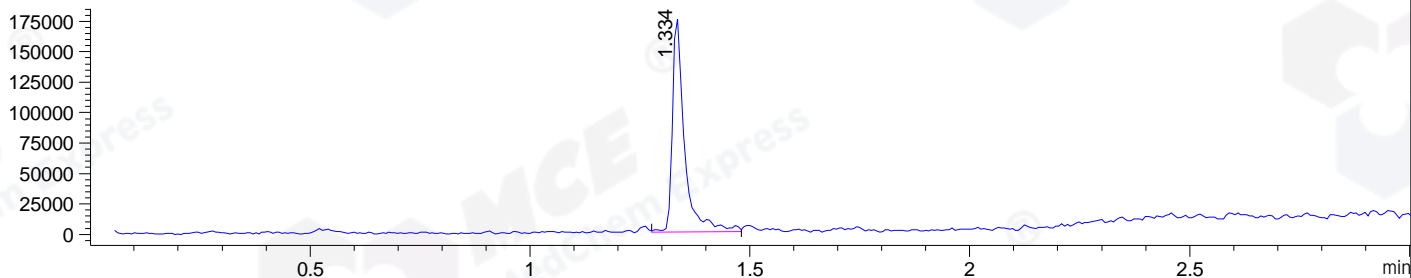


File ..DATA\2020\20200609\987\CPK2020-608-07151-.D Tgt Mass (CHM):
 Injection Date : 10 Jun 20 5:55 am +0800 Seq. Line : 152
 Sample Name : CPK2020-608-07151 Location : P1-B-08
 Acq. Operator : ZJ_1432 Inj : 1
 Spec. Reported : MS Integration Inj Volume : 0.5 ul
 Acq. Method : D:\Chem32\1\data\2020\20200609\987\1-POS-3MIN.M
 Analysis Method : D:\CHEM32\1\DATA\2020\20200609\987\1-POS-3MIN.M
 Catalog No : HY-15425A
 Method Info : Mobile Phase: A: water(0.01%TFA) B:ACN(0.01%TFA)
 Gradient: 5% to 95%B within 1.3 min
 Flow Rate :1.8ml/min
 Column :SunFire C18, 4.6*50mm,3.5um A-RP-607
 Oven Temperature : 45□

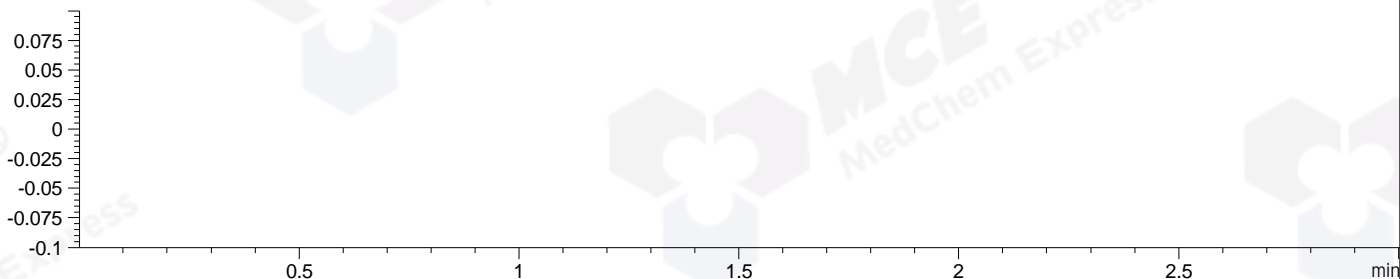
DAD1 B, Sig=214,4 Ref=off



MSD1 TIC, MS File ES-API, Pos, Scan, Frag: 70



Ion 658, MSD1 658, Target Mass 657 +H Positive, EIC=657.7:658.7



Integration Results for DAD1 B, Sig=214,4 Ref=off

RetTim	Width	Area	Height	Area%	MS (+)
1.32	0.01	570.99	677.60	98.10	466
1.39	0.02	3.06	3.05	0.52	466
1.45	0.01	1.32	2.14	0.23	466
1.48	0.01	5.33	6.60	0.92	466
1.53	0.01	1.33	1.69	0.23	ND

Integration Results for MSD1 TIC, MS File

RetTim	Width	Area	Height	Area%	MS (+)
1.33	0.03	338728.44	176511.17	100.00	466

Ret. Time: 1.33

<<<< POSITIVE SPECTRA >>>>

ES-API Positive

